

Measure J Update

05/26/2021

Implementation of Series A and B

- Technology Swing Space – Complete
- Technology Remodel (State Funds \$6.3M Bond Funds \$2.1M)
 - Award Contract – February 2021
 - Construction began – March 2021
 - Project complete – February 2022
 - Program move in – June 2022
- Scenario Village (Construction Phase I/Phase II)
 - Phase I - Construction of underground infrastructure – Complete
 - Phase II - Buildings
 - DSA approval – March 2021
 - Bidding – April 2021
 - Construction begins – August 2021
 - Project Complete – October 2021

Technology Remodel Swing Space



Technology Remodel Swing Space - Final





Technology Building Demolition Begins





Technology Building Demolition Begins





Technology Building Demolition Begins





Technology Building Demolition Begins





Technology Building Demolition Begins District Contingencies Come Into Play for the “Unknowns”





Technology Building Demolition Begins District Contingencies Come Into Play for the “Unknowns”





Technology Building Remodel

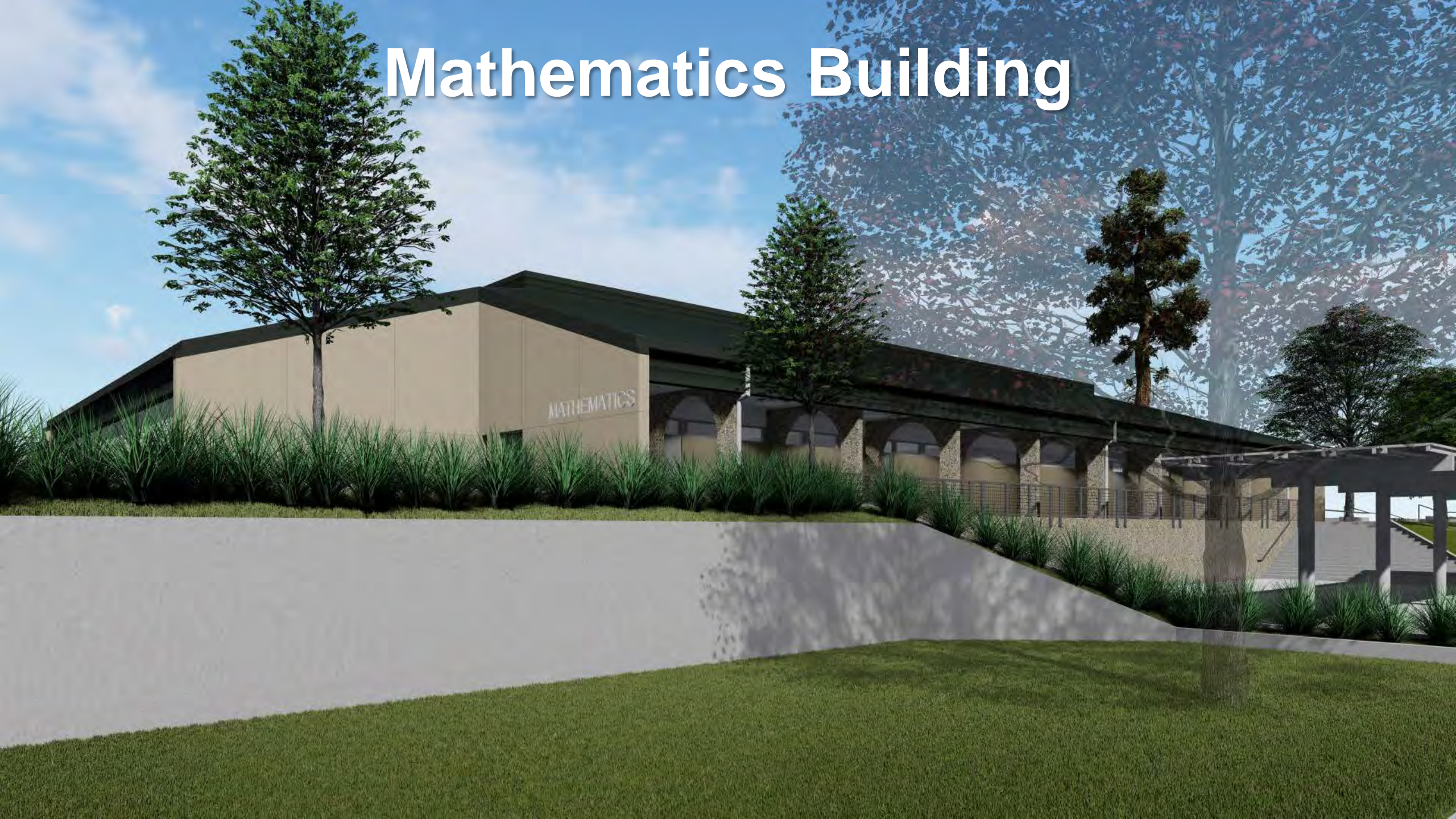


View from Library Triangle



Main Entrance

Mathematics Building





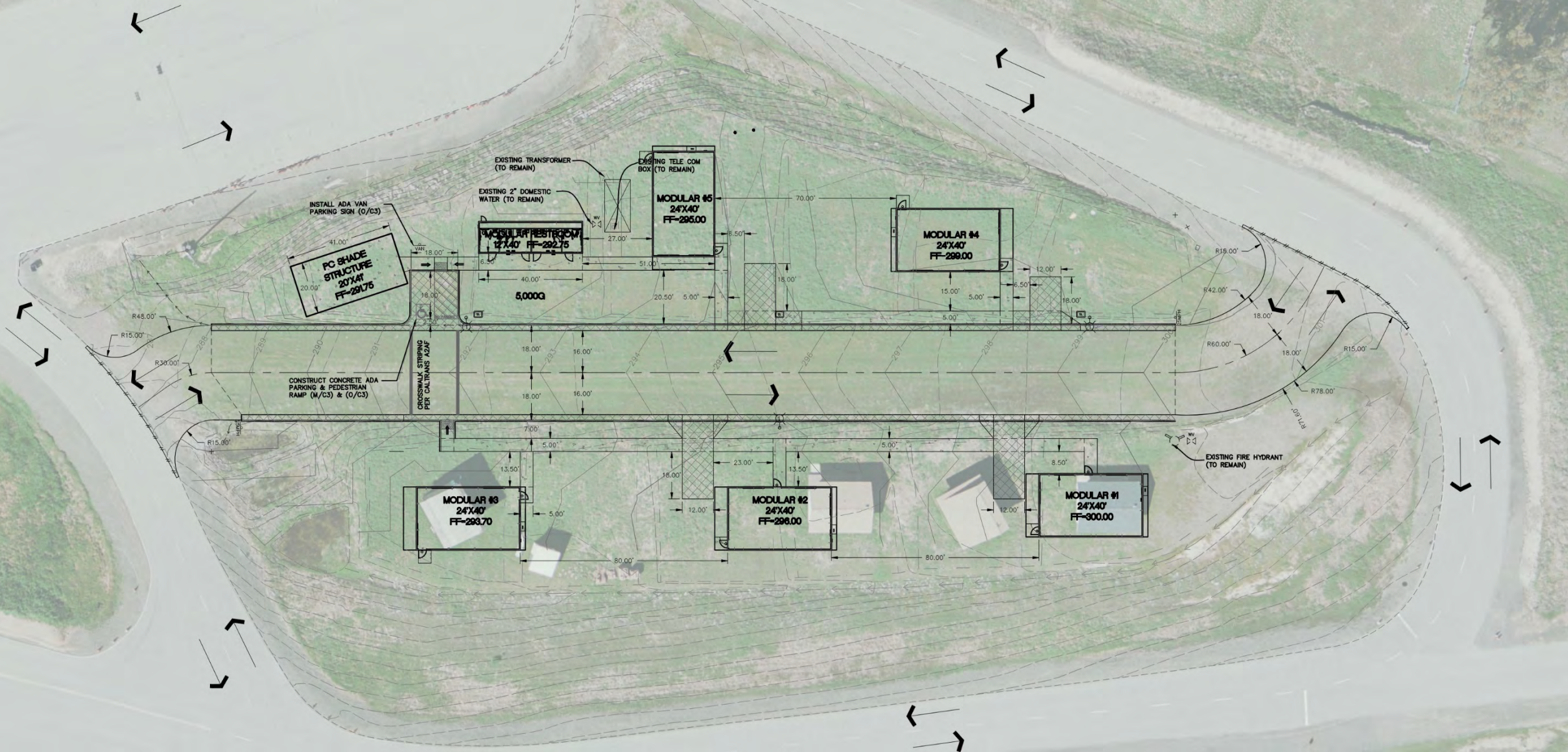
Mathematics Building



Scenario Village – Phase I Infrastructure



Scenario Village – Phase II Modular



Implementation of Series B (2020 – 2023)

- Science Building (Planning Spring 2021)
 - Tour of Chico State Science Building – Complete
 - Future Tour of Solano College – Delayed due to COVID planning for Summer 2021
 - Program Planning Verification – July 2021
 - RFQ for Design Build Team – August 2021
- IT Upgrades
 - **Smart Classrooms:**
 - Complete the refresh of classroom technologies to current standard. There are 26 classrooms remaining.
 - Skyway Center – Summer 2021
 - **Phones/Voip:** - Replace UPS systems and batteries that provide power to the network switches supporting our phones and WAPs on campus. - Complete
 - **Network** - Replace aging network switches connected to the server and storage equipment in the data centers to increase backbone switching capacity, provide better redundancy and allow for future disaster recovery design options. – Summer 2021
 - **Servers/Infrastructure** - Server lifecycle replacement for 15 servers - 2021. These server support our infrastructure.
 - **Continue Computer Lifecycle Refresh**

Implementation of Series A and B

- Facilities Infrastructure Upgrade
 - ADA Assessment – Continue Repairs
 - Storm Drain Repairs Phase III (Parking Lot 4) – Design – Summer 2022
 - Gas line Repairs (AHPS/Tech/LS/PS/LRC) Phase III – Construction May – June 2021
 - Pump House #2 – Fire Protection – Complete
 - Campus Drive Overlay/Repair
 - Bid - April 2021
 - Construction – May – November 2021
 - Replacement of underground storage tank with above ground tanks
 - Bid - April 2021
 - Construction – May – November 2021
 - Roof Repairs
 - Library/Media Center – Complete
 - Arts – Summer 2021 - Complete

Arts Roof (Before)



Arts Roof (After)



Library/Media Center Roof (Before)



Media Center Roof



Library Roof

Library/Media Center Roof (After)



Media Center Roof



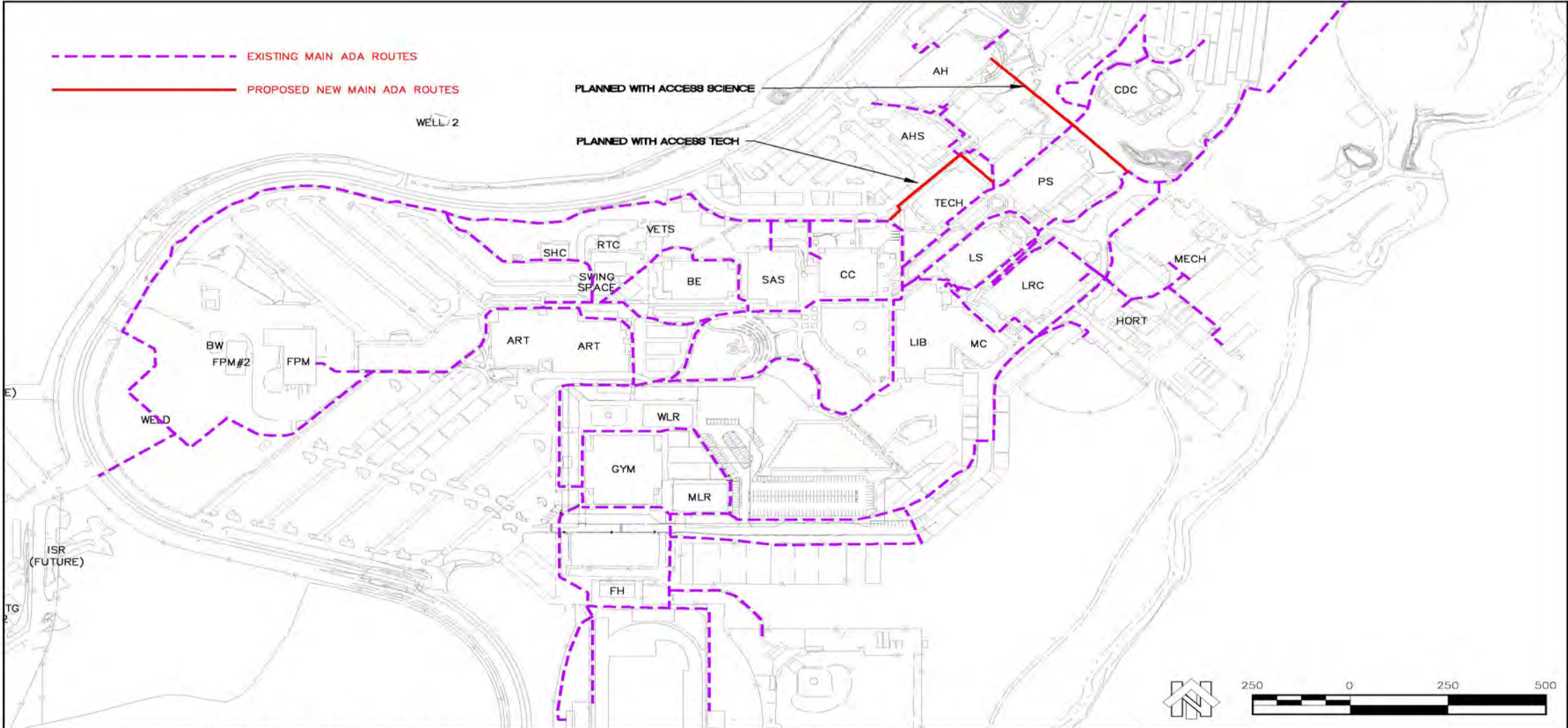
Library Roof



2016 – Accessibility Survey was conducted

- 6,785 findings throughout all campus locations
- Majority of the findings:
 - Furniture too close to doors
 - Signage at the wrong height or missing
 - House keeping
 - Door closer push weight too high
 - Path of travel slopes and obstructions
 - Toilet accessories placement incorrect height
 - Vending machines non-compliant
- Where are we with progress?
 - 1,792 Completed (increase from last meeting of 620)
 - 2172 In progress of being remedied
 - 2821 Being reviewed

ADA Upgrades – To Be Completed



Designed:	
Drawn By:	RMS
Approved:	
Date:	10-06-2020

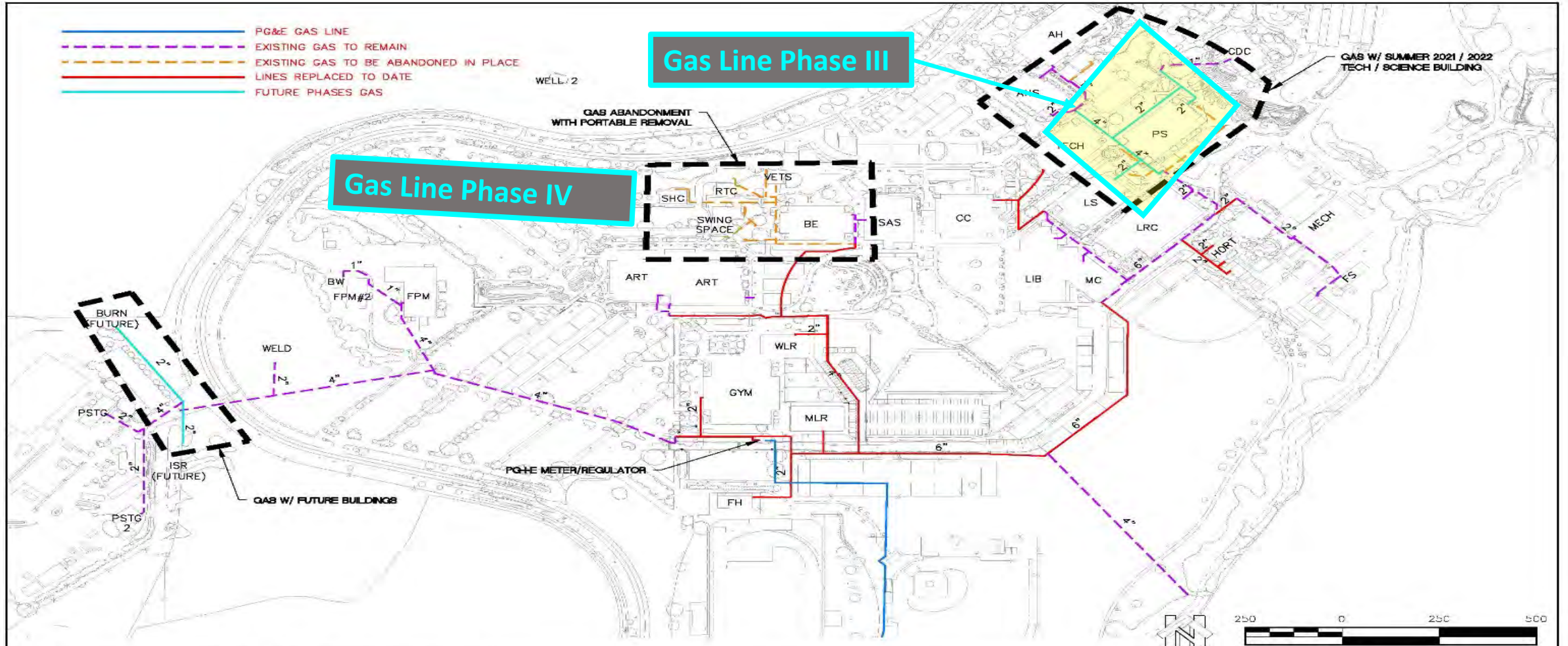

NORTHSTAR
 ... Designing Solutions
 111 MISSION RANCH BLVD, SUITE 100, CHICO, CA 95926
 PHONE: (530) 893-1600 www.northstareng.com

--

BUTTE COLLEGE
 3536 BUTTE CAMPUS DRIVE
 CHICO, CALIFORNIA

ADA EXHIBIT			
BUTTE COLLEGE			
APN Number 000-000-000	Job Number 16-279	Scale 1" = 250' Horz. N/A Vert.	Sheet 1 Of 1

Gas Line Replacement – Next Phase



Designed:	
Drawn By:	RMS
Approved:	
Date:	10-6-2020

NORTHSTAR
... Designing Solutions

111 MISSION RANCH BLVD SUITE 120 CHICO, CA 95926
PHONE: (530) 898-6600 www.northstareng.com

BUTTE COLLEGE
3536 BUTTE CAMPUS DRIVE
CHICO, CALIFORNIA

GAS EXHIBIT			
BUTTE COLLEGE			
APN Number 000-000-000	Job Number 16-279	Scale 1"=250' Horz. Verif.	N/A
			Sheet 1 of 1

Gas Line Replacement – Next Phase



Gas Line Replacement – Next Phase



Pump House #2 Replacement





Pump House #2 Replacement



Campus Drive Overlay/Repair

BUTTE COLLEGE CAMPUS DRIVE

COMPOUND CURVE	CC	POINT OF INTERSECTION	PI
CURB FACE	CF	PROPERTY LINE	PL
CURB AND GUTTER	CG	POWER POLE	PP
CENTERLINE	CL	POINT OF REVERSE CURVATURE	PRC
CORRUGATED METAL PIPE	CM	PUBLIC STORM DRAIN EASEMENT	PSSE
CONCRETE MASONRY UNIT	CMU	PUBLIC SANITARY SEWER EASEMENT	PSSE
CLEAN OUT	CO	POINT OF TANGENCY	PT
CUBIC YARDS	CU	PUBLIC UTILITY EASEMENT	PUE
DRAIN INLET	DI	POLYVINYLCHLORIDE	PVC
ELECTRICAL	E	POINT OF VERTICAL INTERSECTION	PVI
END CURVE	EC	RADIUS	R
EXISTING GROUND	EG	REINFORCED CONCRETE PIPE	RCP
ELEVATION	ELEV	RELATIVE DENSITY	RD
EDGE OF PAVEMENT	EP	RETURN	RET
END VERTICAL CURVE	EVC	RIGHT-OF-WAY	ROW
EXISTING	EX	RIGHT	RT
FUTURE	FT	SLOPE	S
FINISH FLOOR	FF	STORM DRAIN	SD
FINISH GRADE	FG	STORM DRAIN MAINTENANCE HOLE	SDMH
FIRE HYDRANT	FH	SERVICE	SERV
FLOORING	FL	SUB GRADE	SG
FACE OF CURB	FC	SANITARY SEWER	SS
FEET	FT	SANITARY SEWER MAINTENANCE HOLE	SSMH
G	G	STATION	STA
GAUGE	GA	STANDARD	STD
GRADE BREAK	GB	SIDEWALK	SW
GAS METER	GM	TRANSFORMER	T
HANDICAP RAMP	HCRAMP	TOP BACK OF CURB	TBC
HIGH DENSITY POLYETHYLENE	HDPE	TOP OF CURB	TOC
INVERT ELEVATION	IE	TELEPHONE	TEL
JOINT POLE	JP	TOP OF SLOPE	TOS
JOINT TRENCH	JT	TOP OF SLOPE	TOS
L	L	TOP OF MALL	TOM
LATERAL	LAT	TYPICAL	TYP
LINEAR FEET	LF	VITRIFIED CLAY PIPE	VCP
LIP OF GUTTER	LPG	VALLEY GUTTER	VG
LEFT	LT	WATER	W
MAXIMUM	MAX	WATER METER	WM
MAXIMUM DRY DENSITY	MDD	YARDS	YDS
MAINTENANCE HOLE	MH		

TITLE 24, CCR, PART 9, 2019 CALIFORNIA FIRE CODE STANDARDS CODE
 TITLE 24, CCR, PART 12, 2019 CALIFORNIA REFERENCE STANDARDS CODE
 TITLE 24, CCR, PART 3, 2019 CALIFORNIA ELECTRIC CODE

CONTACT INFORMATION

ARCHITECT & ENGINEER: NORTHSTAR

CONTACT: ROSS SIMMONS, PE #8511
 ADDRESS: 111 MISSION RANCH BLVD, SUITE 100
 CHICO CA, 95926
 PHONE: 530-893-1600 X 218
 EMAIL: RSSIMMONS@NORTHSTARENG.COM

OWNER: BUTTE-GLENN COMMUNITY COLLEGE

CONTACT: KIM A. JONES, DIRECTOR
 FACILITIES PLANNING AND MANAGEMENT,
 ADDRESS: 3536 BUTTE CAMPUS DRIVE
 ORVILLE CA, 95965
 PHONE: 530-879-6144
 FAX: 530-895-2823
 EMAIL: KJONES@BUTTE.EDU

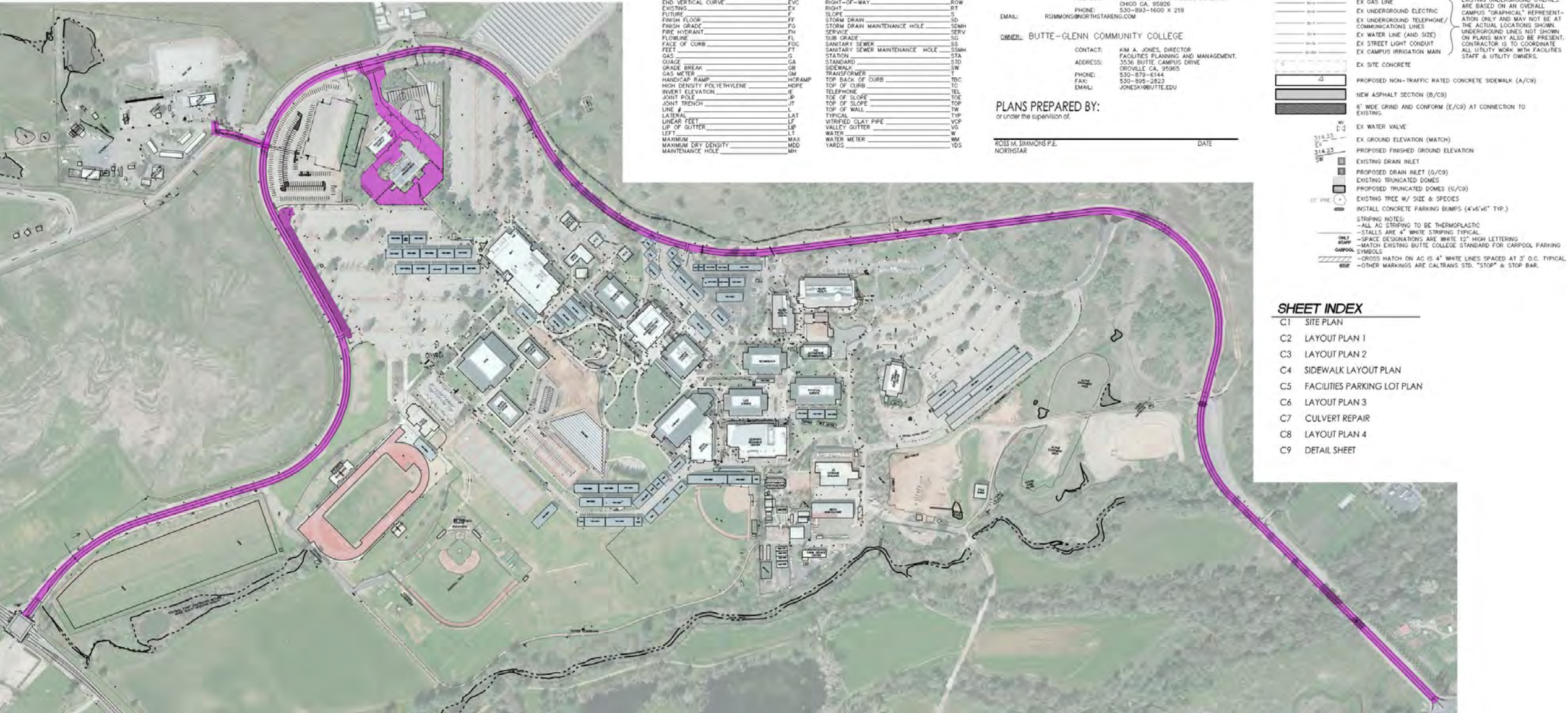
PLANS PREPARED BY:
 or under the supervision of

ROSS M. SIMMONS P.E. DATE
 NORTHSTAR

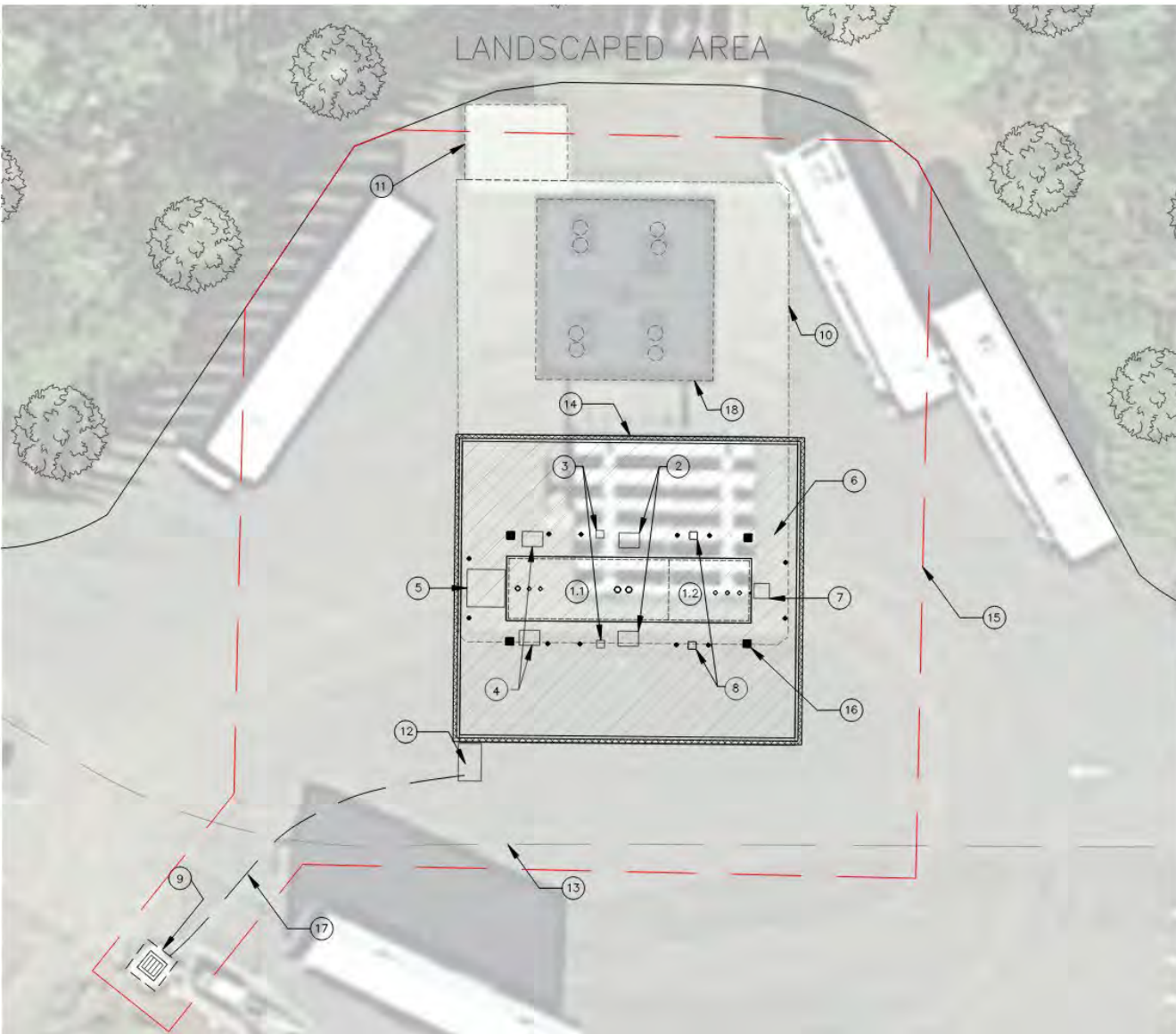
6" SS
 EX SANITARY SEWER PIPE
 PROPOSED GRADING CATCH LINE
 PROPOSED FLOW LINE
 PROPOSED GRADE BREAK
 EX EDGE OF SIDEWALK
 EX CONCRETE CURB OR AC DW
 PROPOSED CONCRETE CURB (D/C18)
 PROPOSED SAWCUT AND CONFORM LINE
 EX GAS LINE
 EX UNDERGROUND ELECTRIC
 EX UNDERGROUND TELEPHONE/
 COMMUNICATIONS LINES
 EX WATER LINE (AND SIZE)
 EX STREET LIGHT CONDUIT
 EX CAMPUS IRRIGATION MAIN
 EX SITE CONCRETE
 PROPOSED NON-TRAFFIC RATED CONCRETE SIDEWALK (A/C9)
 NEW ASPHALT SECTION (B/C9)
 6" WIDE GRIND AND CONFORM (E/C9) AT CONNECTION TO EXISTING
 EX WATER VALVE
 EX GROUND ELEVATION (MATCH)
 PROPOSED FINISHED GROUND ELEVATION
 EXISTING DRAIN INLET
 PROPOSED DRAIN INLET (6/C9)
 EXISTING TRUNCATED DOME
 PROPOSED TRUNCATED DOME (6/C9)
 EXISTING TREE W/ SIZE & SPECIES
 INSTALL CONCRETE PARKING BUMPS (4'x6"x6" TYP.)
 STRIPING NOTES:
 -ALL AC STRIPING TO BE THERMOPLASTIC
 -STALLS ARE 4" WHITE STRIPING TYPICAL
 -SPACE DESIGNATIONS ARE WHITE 12" HIGH LETTERING
 -MATCH EXISTING BUTTE COLLEGE STANDARD FOR CARPOOL PARKING SYMBOLS
 CARPOOL
 -CROSS HATCH ON AC IS 4" WHITE LINES SPACED AT 3' O.C. TYPICAL
 -OTHER MARKINGS ARE CALTRANS STD. "STOP" & STOP BAR.

SHEET INDEX

- C1 SITE PLAN
- C2 LAYOUT PLAN 1
- C3 LAYOUT PLAN 2
- C4 SIDEWALK LAYOUT PLAN
- C5 FACILITIES PARKING LOT PLAN
- C6 LAYOUT PLAN 3
- C7 CULVERT REPAIR
- C8 LAYOUT PLAN 4
- C9 DETAIL SHEET



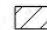
Underground Storage Tank Removal/Replacement

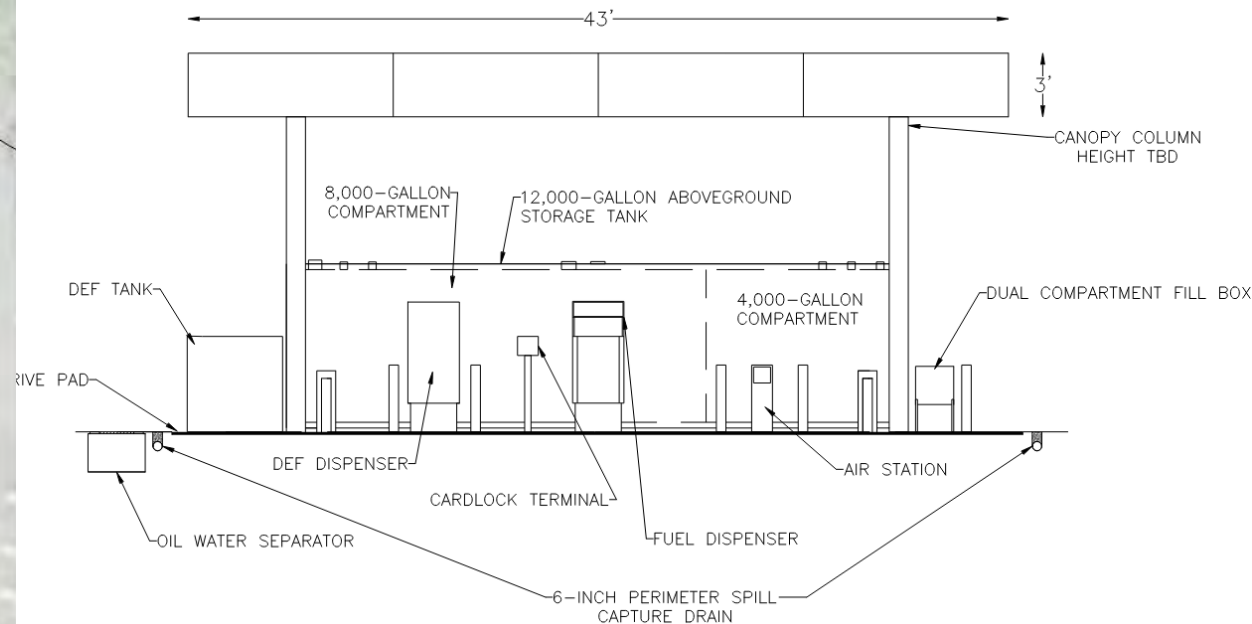


NOTES:

- 1.1. 8,000-GALLON COMPARTMENT OF 12,000-GALLON AST
- 1.2. 4,000-GALLON COMPARTMENT OF 12,000-GALLON AST
2. FUEL DISPENSER
3. CARDLOCK TERMINAL
4. DEF DISPENSER
5. 450-GALLON DEF TANK
6. BOLLARD
7. DUAL COMPARTMENT FILL BOX
8. AIR STATION
9. STORMWATER DROP INLET (EXISTING)
10. EXISTING UST PAD
11. EXISTING STORAGE SHED
12. OIL WATER SEPARATOR
13. ACCESS ROAD
14. CONCRETE DRIVE PAD
15. APPROXIMATE EXTENT OF WORK AREA
16. CANOPY COLUMN SUPPORT
17. NEW CONNECTION TO STORMWATER DROPLET INLET
18. EXISTING TWO 8,000-GALLON USTS

LEGEND:

 41'x43' CANOPY



Construction Challenges

- **COVID-19**

- Workload Impact on District Staff

- New Procedures to work on our campus

- District implemented a COVID-19 Precaution Plan to protect the public and contractors at District job sites from COVID-19 infection and to reduce community transmission and introductions of COVID-19 into new communities
- Contractor and related personnel volunteer to be on-site
- Contractor assumes ALL risk of labor and material shortages; project shutdowns; cost escalations
- Bidding documents and procedures to bid significantly altered to create minimal contact
- Shutdowns during construction without advance notice for periods of time up to 90 days
- Workforce, vendors, and contractor related personnel remain within the confines of the jobsite. Not allowed to go outside of the jobsite area. Encouraged to bring lunch to the jobsite.
- Require workforce, vendors, and contractor related personnel to remain at home when sick, except to get medical care
- Contact tracing of all workforce, vendors and contractors on-site, in meetings and visiting

- Possibility of a project shutdown (not considered essential worker by Chancellor, state or local governance)

- Lack of inspector presence on projects

- Lack of materials/supplies/deliveries etc.

- Continued COVID-19 impacts on Construction

- Labor shortages and lack of skilled labor
- Material shortages and disrupted supply chains
- Material cost escalations
- Decline in work continued remote work practices
- Financial instability

Construction Challenges (Cont'd)

- Cost Escalation

- 25% cost increase on electrical supplies w/ the following increases June 1st (example)

PRICE LINE	NAME	EFFECTIVE DATE	TYPE OF INCREASE	% INC
DOT	L.H. DOTTIE CO.	May 10, 2021	RAW MATERIALS	8%
POW	POWER-STRUT	May 10, 2021	RAW MATERIALS	15-20%
UNS	UNISTRUT	May 10, 2021	RAW MATERIALS	15-20%
ELF	ELECTRI-FLEX	May 13, 2021	RAW MATERIALS	15-25%
ANA	ANAMET ELECTRICAL INC	May 15, 2021	RAW MATERIALS	15-20%
DWY	DWYER INSTRUMENTS	May 15, 2021	RAW MATERIALS	3-5%
HPW	HUBBELL PREMISE WIRING	May 15, 2021	RAW MATERIALS	5-15%
HUB	HUBBELL WIRING DEVICES - KELLEMS	May 15, 2021	RAW MATERIALS	5-13%

- 100 - 340% cost increase on wood/metal framing supplies
- 30% cost increase on rebar/metal/concrete supplies
- Concrete now at \$150 per yard (\$110 per yard this time last year)
- PVC pipe becoming unavailable
- Pricing changing daily – Quotes good for as little as two days
- Contractors unable to buyout projects; buying materials when they become available and needing temporary storage on site
- Longer lead times

Construction Challenges (Cont'd)

- Skilled Workforce
 - New requirements for Community Colleges effective January 2020
 - Existing law requires all public works contracts “*relating to school facilities*” and “*design-build contracts*” to comply with skilled and trained workforce” requirements.
 - “Skilled and trained workforce” means a workforce that meets all of the following conditions:
 - All the workers performing work in an apprenticeable occupation in the building and construction trades are either skilled journeypersons or apprentices registered in an apprenticeship program approved by the chief.
 - **After January 1, 2020, at least 60 percent of the skilled journeypersons employed to perform work on the contract or project by every contractor and each of its subcontractors at every tier are graduates of an apprenticeship program for the applicable occupation.**
 - Penalties include civil fines by the Labor Commissioner up to \$10,000 per month per non-compliant contractor, disqualification from bidding on future public works contract, and withholding of payment for delinquent contractors.
- More of a Union presences at our jobs
- Shortage of workers and shortage of local “skilled and trained workforce”
- Bidders bidding work sharing with the District they cannot find workers locally

Construction Challenges (Cont'd)

- More Bidders
 - It sounds good, but many are from outside of Butte-Glenn region
 - Many have never worked on Public Works projects before
 - Many have never worked with the District before (no established relationship)
 - Many “*Hard Bid*” contractors bidding projects with low or no margins then looking to pick up their margin through change orders making managing a project very difficult and more time consuming for the District
 - Many unqualified, but able to bid in accordance with the Public Contract Code
- DSA
 - Short handed – lack of review – working remotely (COVID Related)
 - New Process - “Project Submittal Appointment Process” (replaces “bin time”)
 - When the cost of a reconstruction, alteration, or addition of an existing building exceeds 50% of replacement value DSA determines when a rehabilitation is required to an existing certified school building verses new construction.
 - Funds used to construct new building verses the cost to reconstruct or alter
 - Replacement value \$412/SF (adopted by Office of Public School Construction)
 - Community College values determined by Chancellor’s Office by room type
 - These new construct values are considerably lower that actual cost in our opinion
 - New Seismic Review (Buildings Built prior to 1970 earthquake)
 - New Wildfire Designations



Our Plan



Immediate Plan

- Manage project budgets and contingencies
 - Manage challenges to budget effectively utilize contingencies
- Focus on planning while construction costs cycle back down
- Look at project sequencing to gain efficiencies and cost savings. Move forward with projects that do not require bidding:
 - Last scheduled construction project bid this week
 - Projects mostly within budgets and District has been minimally affected directly by escalation and shortages
 - Scenario Village completes in October, UG Fuel Replacement/Campus Drive in November and Technology in February 2022
 - Working on planning and development Science Project
- Challenge of many "*Hard Bid*" contractors and contractors outside our region bidding projects being met by modifying District's Statement of Qualification on each project to provide specific performance and experience requirement similar to scope of work bid





Our Plan



Longer Range Plan

- Plan for future cost escalations
- Estimate “time value of money” into cost estimates for future projects
- Anticipate/plan for construction costs to hopefully cycle back down next 12-18 months
- Continue to embrace all construction delivery systems and choose based on what is best for the District at the time. (Not one size fits all)
 - Design-Bid-Build (“Hard Bids” Cost based on 100% plans)
 - Design-Build (Based on Qualifications and Price-Design to Cost)
- As we design, utilize District Standards and focus on energy efficiency to help with total cost of ownership of the building.
- KISS every project (Keep It Simple Strategy)





Main Goal – Stay ahead of the Pack and Keep construction going Safely!



Remaining Bond Project Sequence

Series C (May 2023 – May 2025)

- Science Building (construction)
- I.T. Upgrades
- Facilities Infrastructure Upgrades

Series D (May 2025 – May 2028)

- Life Science Remodel for Veterans and Student Services
- Physical Science Remodel
- Athletics Phase II
- I.T. Upgrades
- Facilities Infrastructure Upgrades

Series E (May 2028 – May 2030)

- Law Enforcement Training Center
- Removal of Portables for Veterans and Student Services
- Facilities Infrastructure Upgrades
- I.T. Upgrades

ID	Task Name	Duration	Start	Finish	2016		2017		2018		2019		2020		2021		2022		2023		2024		2025		2026		2027		2028		2029		2030		2031		
					H2	H1	H2	H1	H2	H1	H2	H1	H2	H1	H2	H1	H2	H1	H2	H1	H2	H1	H2	H1	H2	H1	H2	H1	H2	H1	H2	H1	H2	H1	H2		
1	Bond Approved	1 day	Tue 11/8/16	Tue 11/8/16				11/8/16																													
2	Arrange Funds - Series A	40 days	Thu 11/10/16	Wed 1/4/17																																	
3	Arrange Funds - Series B	45 days	Mon 4/1/19	Fri 5/31/19																																	
4	Skyway Remodel	591 days	Fri 3/24/17	Thu 6/27/19																																	
5	Skyway construction	591 days	Fri 3/24/17	Thu 6/27/19																																	
6	Welding Building	675 days	Mon 4/3/17	Thu 10/31/19																																	
7	Welding Design/Construction	675 days	Mon 4/3/17	Thu 10/31/19																																	
8	Athletics	2159 days	Mon 10/2/17	Wed 12/31/25																																	
9	Field House/Press Box	556 days	Mon 10/2/17	Sat 11/16/19																																	
10	Covered Practice Field	260 days	Mon 1/6/25	Wed 12/31/25																																	
11	Technology/Math Renovation	617 days	Wed 10/16/19	Tue 2/22/22																																	
12	TE Design / Construction	617 days	Wed 10/16/19	Tue 2/22/22																																	
13	Scenario Village	621 days	Mon 6/3/19	Fri 10/15/21																																	
14	Design & Construction	621 days	Mon 6/3/19	Fri 10/15/21																																	
15	Science Building	1025 days	Thu 7/1/21	Sat 5/31/25																																	
16	Science Building Design	133 days	Thu 7/1/21	Sat 1/1/22																																	
17	Science Building Construction	763 days	Fri 7/1/22	Sat 5/31/25																																	
18	Physical Science Remodel	523 days	Sun 6/1/25	Tue 6/1/27																																	
19	PS Design	219 days	Sun 6/1/25	Wed 4/1/26																																	
20	PS Construction	305 days	Wed 4/1/26	Tue 6/1/27																																	
21	Life Science Remodel	524 days	Mon 6/1/26	Thu 6/1/28																																	
22	LS Design	219 days	Mon 6/1/26	Thu 4/1/27																																	
23	LS Construction	306 days	Thu 4/1/27	Thu 6/1/28																																	
24	Law Enforcement Training Center	612 days	Mon 5/1/28	Sun 9/1/30																																	
25	LETC Design	219 days	Mon 5/1/28	Wed 2/28/29																																	
26	LETC Construction	393 days	Thu 3/1/29	Sun 9/1/30																																	
27	Remove Portables	196 days	Mon 7/3/28	Sat 3/31/29																																	
28	Facilities Infrastructure	3173 days	Mon 4/16/18	Fri 5/31/30																																	
29	Infrastructure Series A	957 days	Mon 4/16/18	Fri 12/10/21																																	
30	Infrastructure Series B	1046 days	Sat 6/1/19	Wed 5/31/23																																	
31	Infrastructure Series C	523 days	Fri 6/2/23	Sat 5/31/25																																	
32	Infrastructure Series D	784 days	Sun 6/1/25	Wed 5/31/28																																	
33	Infrastructure Series E	524 days	Thu 6/1/28	Fri 5/31/30																																	
34	IT Upgrades	3593 days	Mon 9/5/16	Fri 5/31/30																																	



Project Bond Allocations

- **Welding Building \$23M:** Complete
- **Skyway Center Remodel \$2M:** Complete
- **Athletics \$12M:**
 - **Phase I - \$10.5M** — Complete
 - **Phase II - \$1.5M** This phase if the project is to add the addition of a synthetic practice field.
- **Facilities Infrastructure \$21.7M:** This project replaces the PVC gas lines, broken storm drains and sewer lines, improves deteriorated parking lots and service roads, and makes upgrades to meet newer accessibility requirements, mechanical repairs, energy efficiency projects.
- **I.T. Upgrades \$11M:** This project updates the College's technology infrastructure to alleviate information security issues and provides instruction technology to meet faculty and student needs.
- **Scenario Village \$1M:** This project will provide for dedicated space on campus for academies scenario testing.
- **Technology Building Remodel \$6.8M:** This project will renovate this building to provide modern classrooms to support Mathematics.



Project Bond Allocations

- **Science Building \$73M:** This project provides a new Sciences Building that meets current and projected needs for the Physical and Life Science programs.
- **Life Science Remodel for Veterans and Student Services \$10M:** This project will renovate the existing Life Science building to accommodate the Veterans Center, Safe Place, Sustainability Resource Center, Regional Testing Center and the Call Center. The result will be permanent space for all of these Student Services programs.
- **Physical Science Remodel \$10M:** This project will renovate the existing Physical Science building to accommodate classroom space for Agriculture, Natural Resources, Horticulture and MESA Programs.
- **Law Enforcement Training Center \$16M:** This project would complete the Public Safety Training Area by constructing an indoor firing range.
- **Remove Student Services Portables \$500K**