

Measure J Update



10/19/2022

Projects Complete Series B

Science

Pre-Construction Design Phase

IST Upgrades

Server lifecycle replacement

Facilities Infrastructure

Backflow Replacement/Repairs

Electrical Panel Replacement Campus Center

Storm Drain Repair/Replacement Parking Lot 4



Storm Drain Project



Storm Drain Project



Projects In Progress Series B

Science

IST Upgrades

- > Continue Computer Lifecycle Refresh
- > Electronic Document Management System Upgrade & Replacement

Facilities Infrastructure

- > Gas line Replacement
- > ADA Pathway Improvements
- > ADA Classroom Improvements
- > Wastewater Treatment Plant – Equipment Upgrades
- > Electrical & Fire Life Safety Upgrades
- > Energy Efficient Projects



Science



- Board Approves GMP – December 2022
- DSA Review Increment 1, 2, 3 – October 2022 – November 2023
 - Increment 1 Demolition and Building Site Construction Documents submitted to DSA 10/10/2022
 - Increment 2 Building Construction Documents to DSA NLT 5/28/23
 - Increment 3 Site Solar in Lot 4 and Planetarium to DSA NLT 11/28/23
- Construction Phase – March 2023 – May 2025
 - Increment 1 Demolition and Building Site construction begins March 16, 2023
 - Projects substantial completion March 31, 2025
 - Final Completion May 31, 2025
- Classes Begin – August 2025

COLLEGE CAMPUS MAP



Regional Testing Center
 Student & Administrative Services
 Student Health Clinic
 Swing Spaces
 Welding & Manufacturing
 Women's Locker Rooms

RTC
 SAS
 SHC
 SSA, SSC, SSP, SSW
 WLM
 WLR

Solar Array

Water Tower



Exit to Pentz. Rd., Chico,
 Gridley, Red Bluff
 & Hwy 99

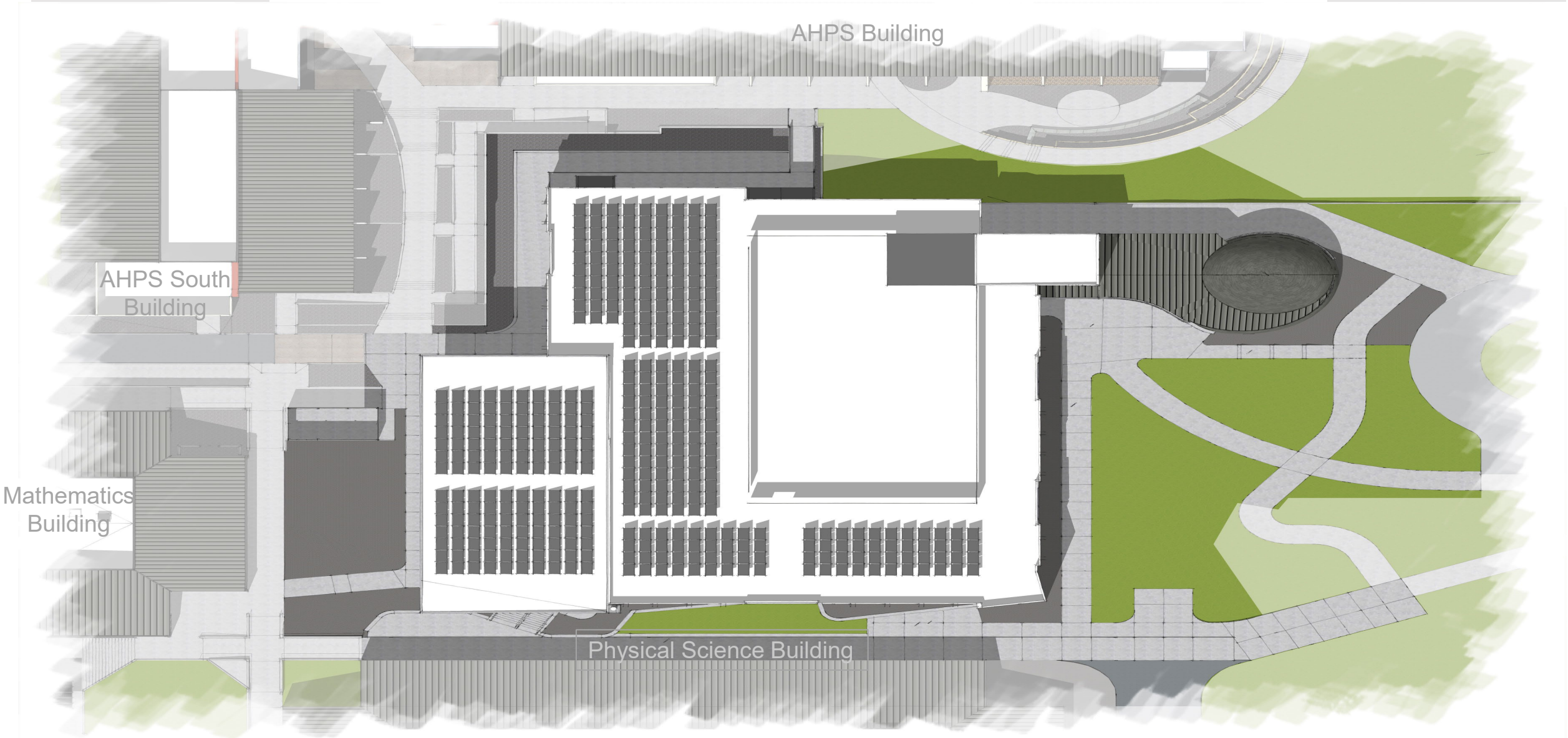
Shipping & Receiving
 Student Equity & Achievement
 Student Learning, Office Of
 Student Life Office
 Student Services, Office Of

SPM
 SAS
 SAS
 CC
 SAS

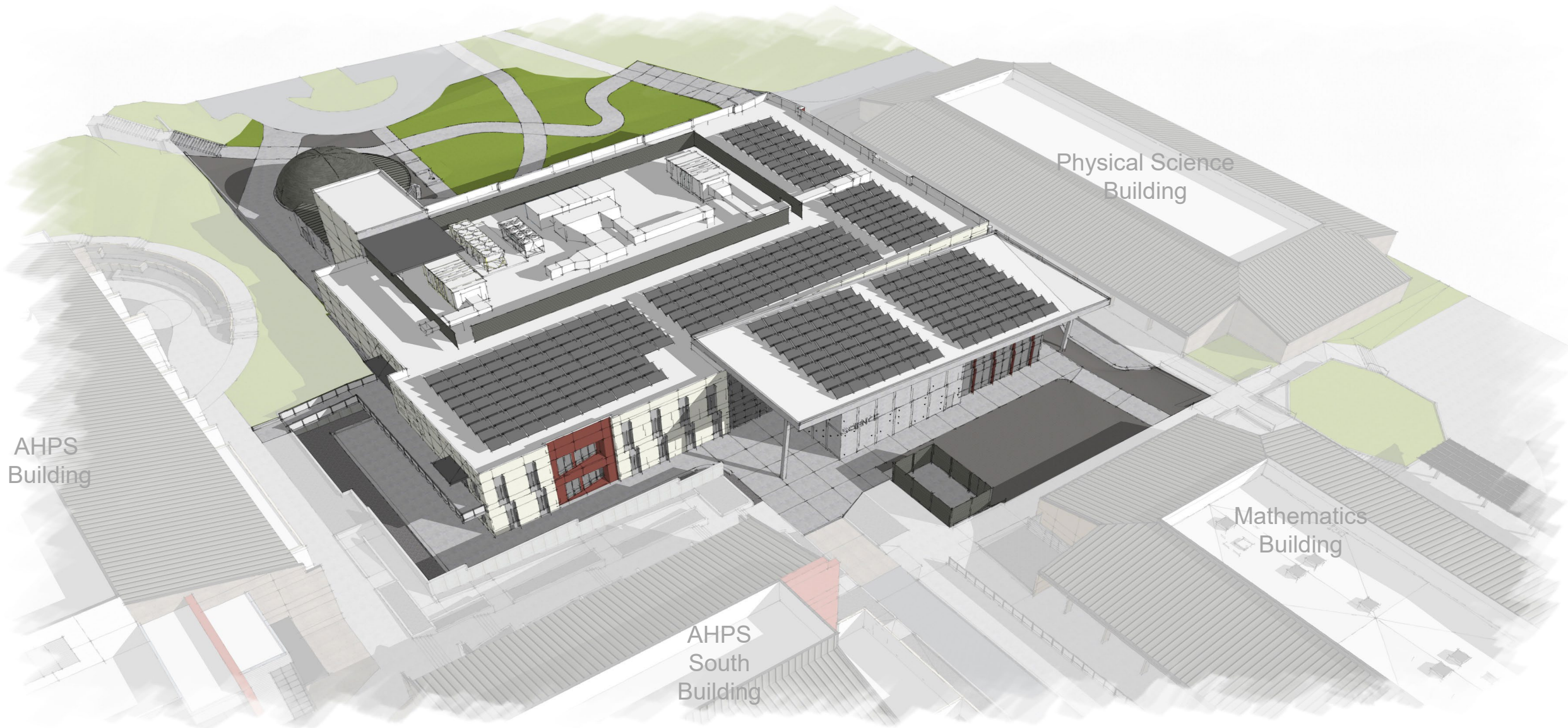
Map Symbols

Bus Loading/Unloading Parking

Science Building Site Plan



Science Building Aerial View



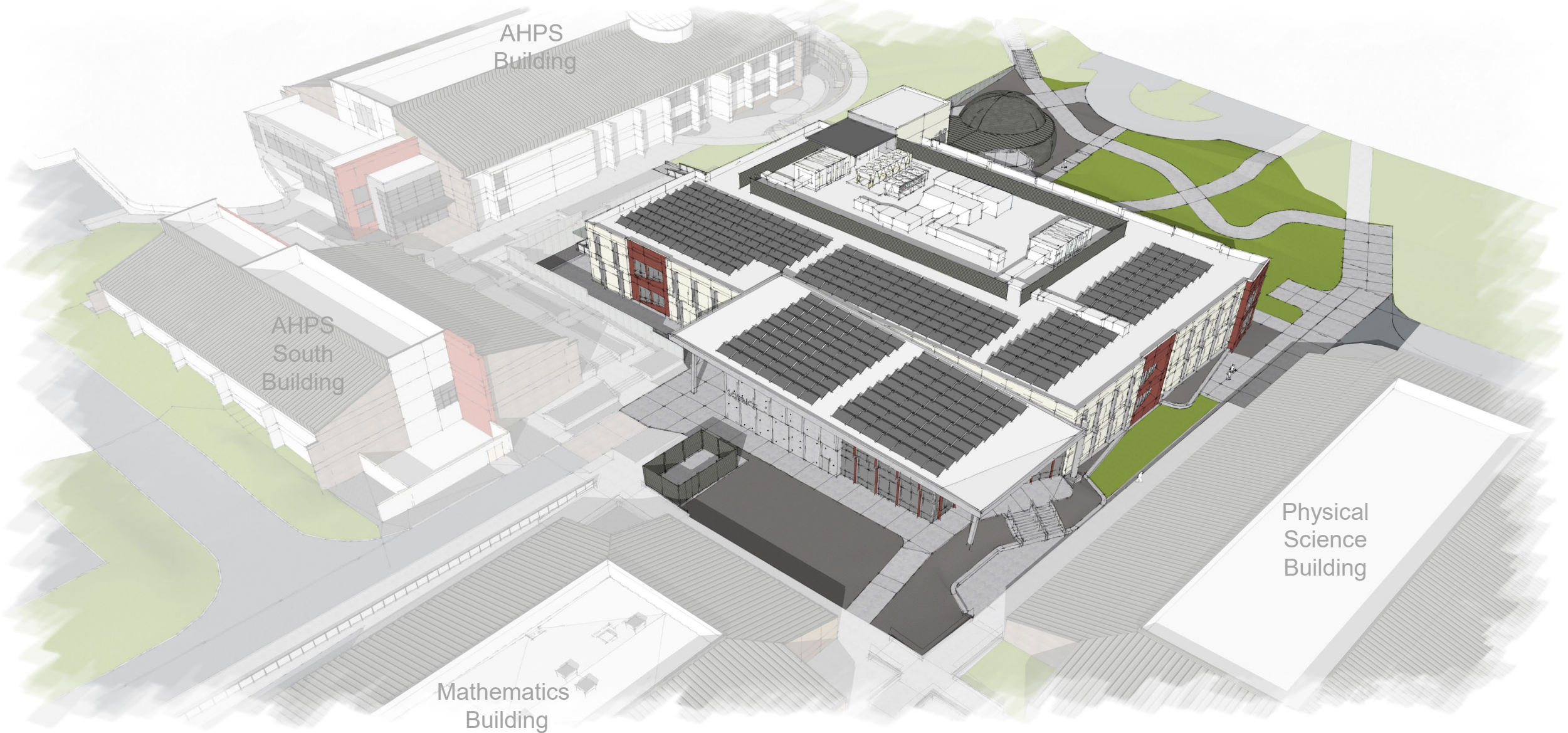
AHPS
Building

Physical Science
Building

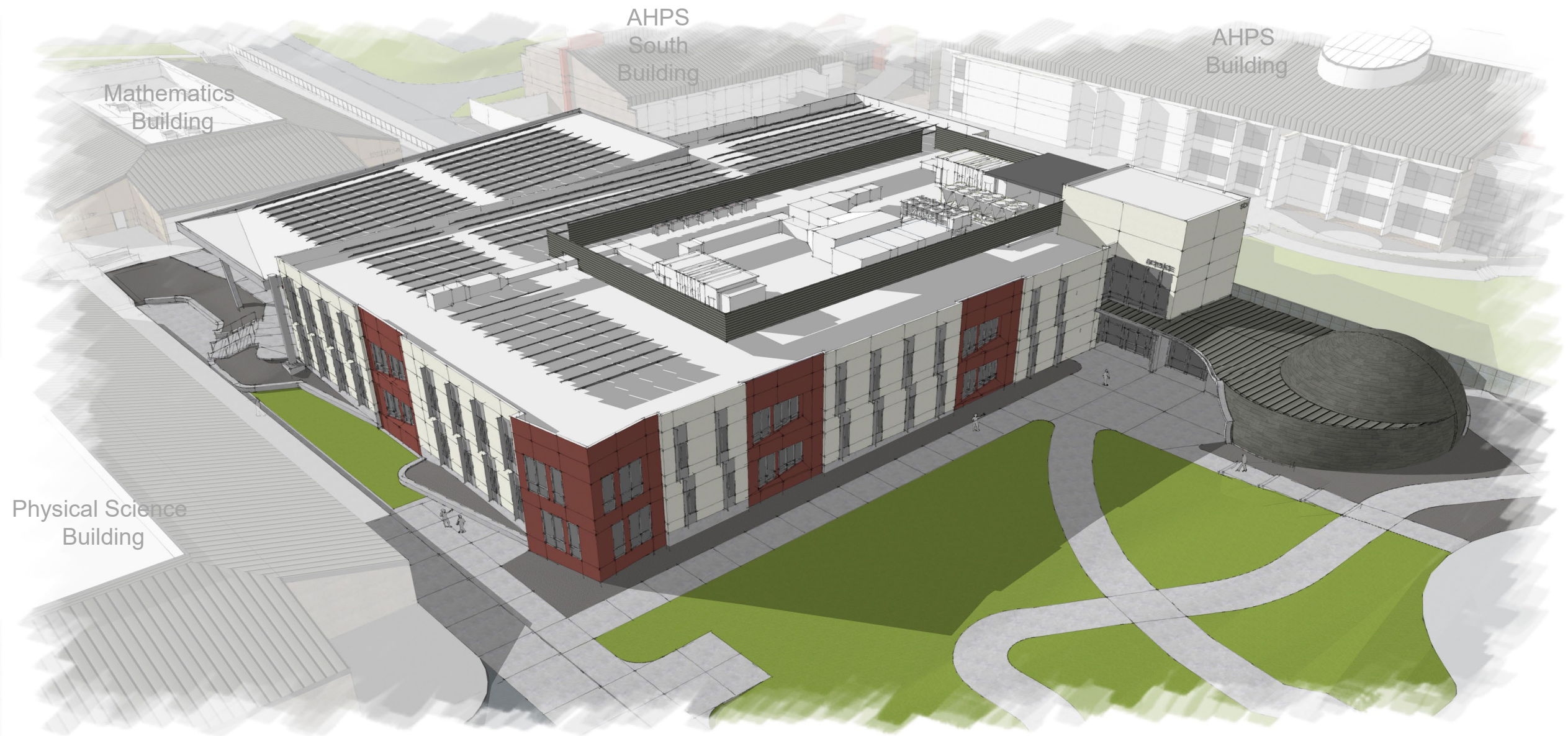
Mathematics
Building

AHPS
South
Building

Science Building Aerial View



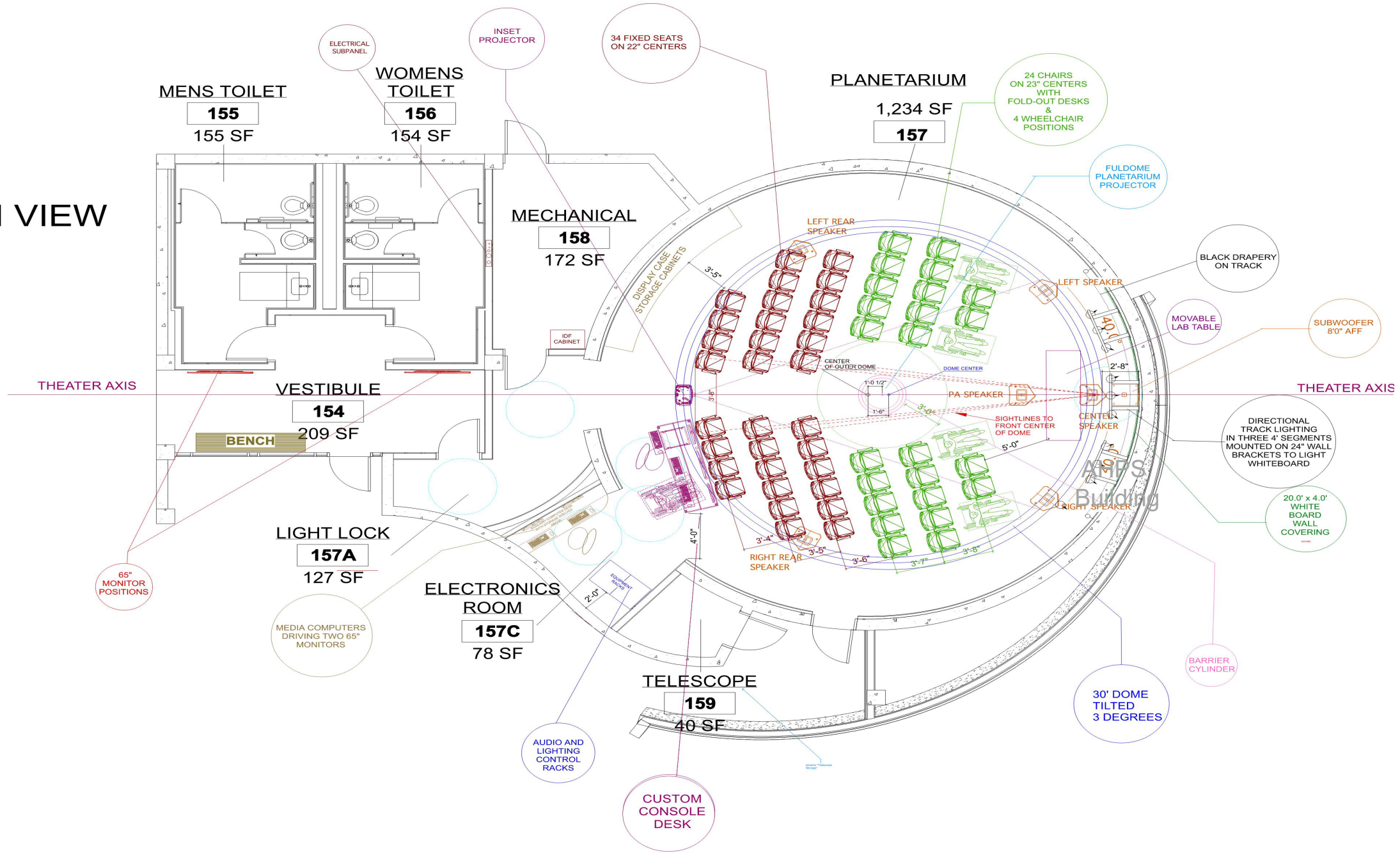
Science Building Aerial View



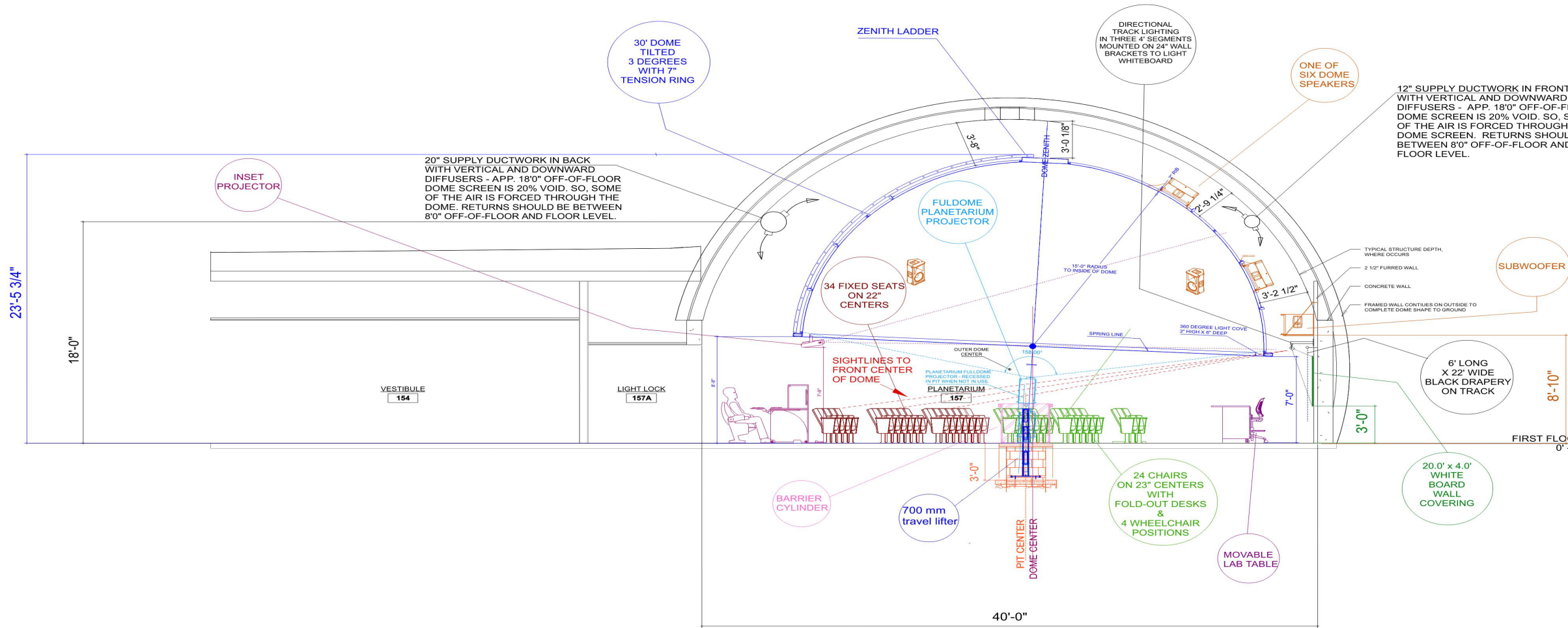
Science Building, View East Corner View from CDC and Physical Science Buildings



PLAN VIEW



SECTION VIEW ALONG PLANETARIUM NORTH/SOUTH THEATER AXIS



3D Tour of our Science Labs



Infrastructure

- > **Gas line Replacement** – New Science Area
- > **ADA Pathway Improvements** – New Science Area
- > **ADA Classroom Improvements**
 - MA/HVAC/Engineering/Construction Programs
- > **Wastewater Treatment Plant Equipment Upgrades**
- > **Electrical & Fire Life Safety Upgrades**
 - Gym Concession
- > **Energy Efficient Projects**
 - EV Charging Stations Main Campus

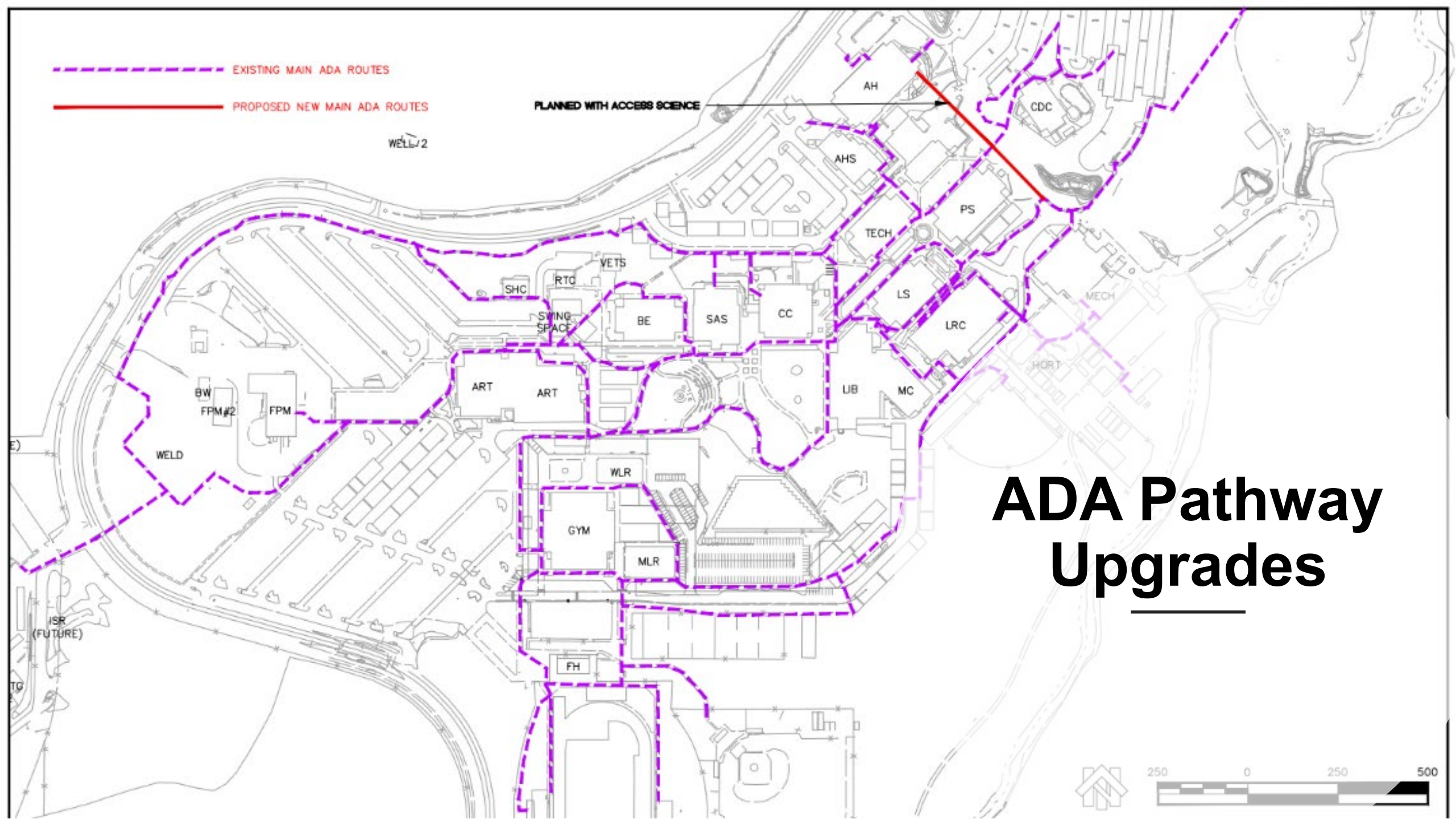


--- EXISTING MAIN ADA ROUTES

— PROPOSED NEW MAIN ADA ROUTES

PLANNED WITH ACCESS SCIENCE

WELL/2



ADA Pathway Upgrades



Repurpose Swing Space

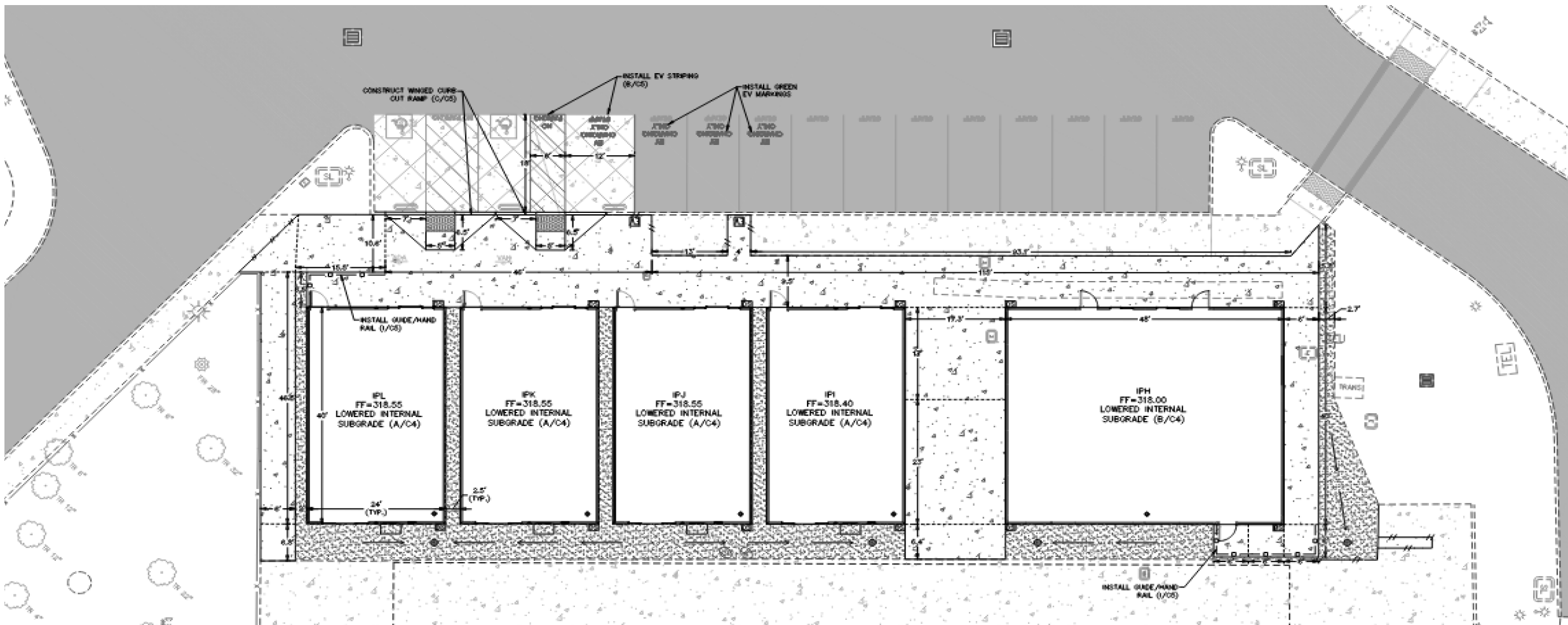


Relocate Classrooms and Labs (Non-ADA Compliant) Mechanized Ag/HVAC/Construction/Heavy Equipment Programs May 2023 – August 2023



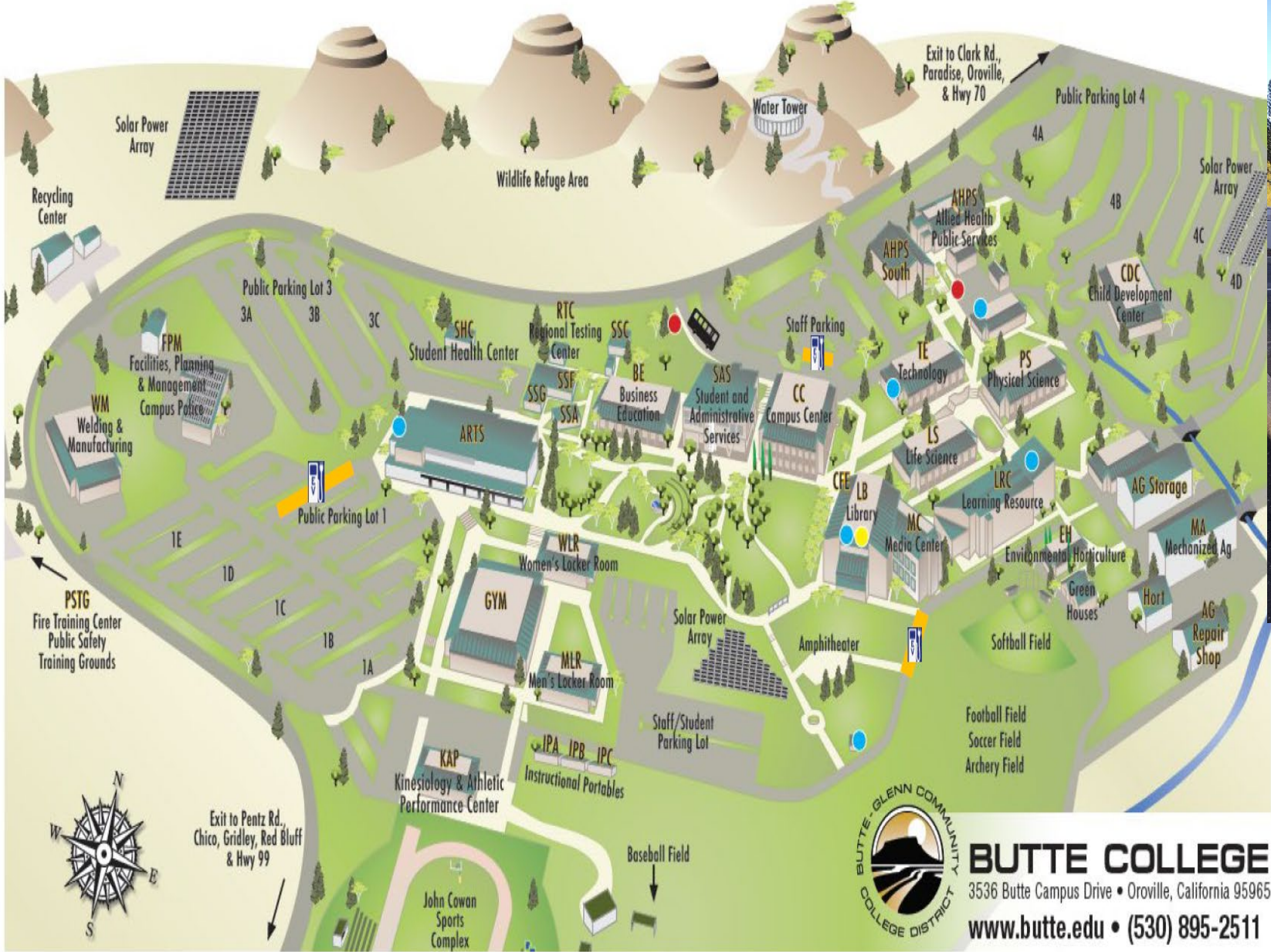
Butte College

MECH AG PORTABLES



Gym Concession ADA, Fire Suppression and Electrical Upgrades Completion Date – November 2022





 = New EV Charger Locations



BUTTE COLLEGE
 3536 Butte Campus Drive • Oroville, California 95965
www.butte.edu • (530) 895-2511

IS&T Upgrades

- **Continue Technology Equipment Lifecycle Refresh & Replacement**
- **Electronic Document Management System Upgrade & Replacement**



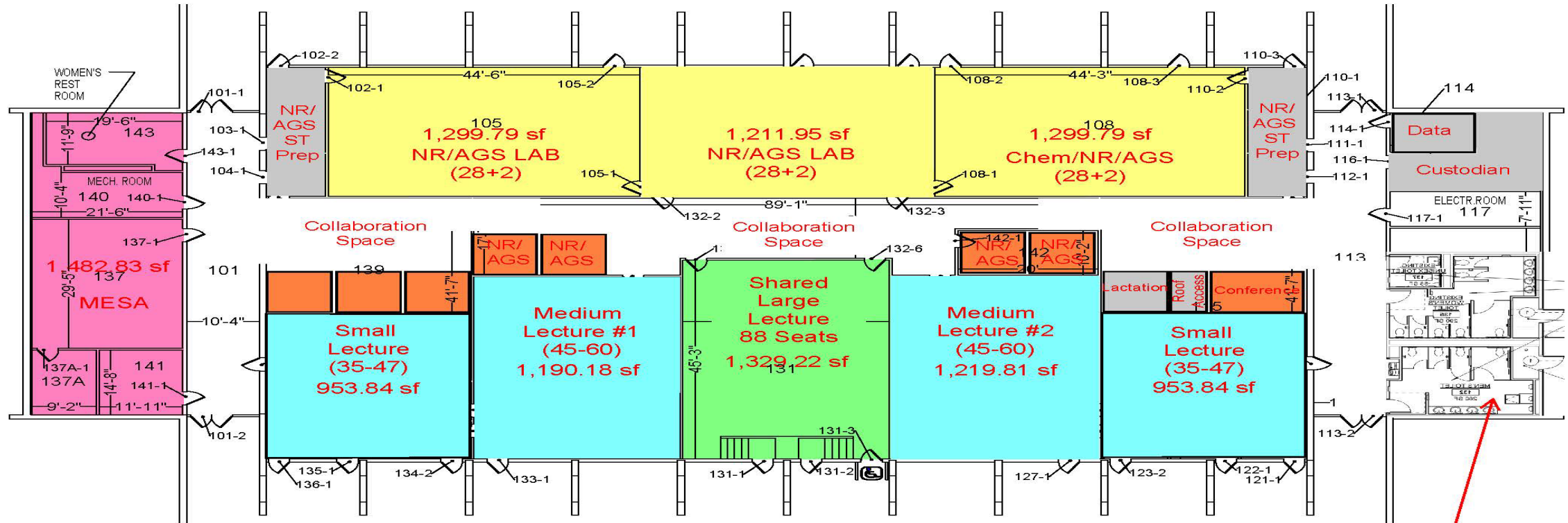
Projects in Series C - \$50M

- **Science - \$41.5M**
 - Construction March 2023 – May 2025
 - Classes Begin – August 2025
- **Physical Science Remodel Planning - \$500K**
- **IST Upgrades - \$2M**
 - Electronic Document Management System Upgrade/Replacement
 - Replace failing fiberoptic cable
 - Replace older failing switches
 - Smart Classroom Technology Upgrade
- **Facilities Infrastructure - \$6M**
 - Infrastructure for Science & Planetarium
 - Gas Line Replacement
 - Parking Lot and Sidewalk Repairs
 - Energy Projects (Lighting, Solar, Commissioning, EV Stations)
 - Fire Alarm System and Emergency Notification Replacement



Physical Science Planning Phase I

PHYSICAL SCIENCE- CONCEPT 040622



NR/AGS Needs

- (1) Lecture 28 + 2
- (3) Wet labs (water only) 28 + 2
- (1) Large Lecture 100
- (4) Faculty Offices

PROGRAM

- Small Lecture (950 sf)
- Medium Lecture (1200 sf)
- Large Lecture
- Wet Labs
- Offices
- MESA

PROPOSED

- 2
- 2
- 1
- 3
- 6
- 1

Restroom
Improvements similar
to Technology

Construction Challenges

- On-Going Constraints from COVID-19
- Materials & Labor Shortages
- Skilled Trained Workforce Requirements
- DSA
- *Hard Bid*
 - Contractor's bidding projects too low
 - Managing Change Orders – Industry Standard is 15 – 30%
- **Cost Escalation**
 - Material prices have not leveled out and have not returned to pre-pandemic cost points
 - Pricing changes daily – Quotes good for as little as two days
 - Longer lead times
 - Shipment Delays

Biggest Challenge

Maintaining Established Bond Project Budgets without jeopardizing scope.

Our Plan

- Consider all construction delivery systems and choose based on what is best for the District at the time. (Not one size fits all)
- Use the Design-Build delivery method whenever possible to shift risk of cost escalations, labor shortages and "Scope Gap" to the DBE Team
- Manage project budgets by "designing" to the budget and include cost escalations in the budget
- Utilize District Standards and focus on total cost of ownership when designing of the building.
- KISS every project (Keep It Simple Strategy)



Cash Flow Spreadsheet

Remaining Bond Project Sequence

Series C (March 2023 – May 2025) - \$50M

- Science Building (construction) \$41.5M
- I.T. Upgrades \$2M
- Facilities Infrastructure Upgrades \$6M
- Physical Science Planning - \$500K

Series D (May 2025 – May 2028) - \$24.4M

- Physical Science Remodel - \$9.5M
- Life Science Remodel for Veterans and Student Services - \$10M
- Removal of Portables for Veterans and Student Services - \$500K
- I.T. Upgrades - \$2.5M
- Facilities Infrastructure Upgrades - \$1.9M

Series E (May 2028 – May 2030) - \$20.3M

- Law Enforcement Training Center - \$16M
- Athletics - \$1.5M
- Facilities Infrastructure Upgrades - \$800K
- I.T. Upgrades - \$2M



Project Bond Allocations - \$190M

- **Welding Building \$23M:** Complete
- **Skyway Center Remodel \$5M:** Complete
- **Scenario Village \$1M:** Complete
- **Technology Building Remodel \$6.8M:** Complete
- **Athletics \$12M:**
 - **Phase I - \$10.5M** – Complete
 - **Phase II - \$1.5M** This phase if the project is to add the addition of a synthetic practice field.
- **Facilities Infrastructure \$21.7M:** This project replaces the PVC gas lines, broken storm drains and sewer lines, improves deteriorated parking lots and service roads, and makes upgrades to meet newer accessibility requirements, mechanical repairs, energy efficiency projects.
- **I.T. Upgrades \$11M:** This project updates the College's technology infrastructure to alleviate information security issues and provides instruction technology to meet faculty and student needs.
- **Science Building \$73M:** This project provides a new Sciences Building that meets current and projected needs for the Physical and Life Science programs.
- **Physical Science Remodel \$10M:** This project will renovate the existing Physical Science building to accommodate classroom space for Agriculture, Natural Resources, Horticulture and MESA Programs
- **Life Science Remodel for Veterans and Student Services \$10M:** This project will renovate the existing Life Science building to accommodate the Veterans Center, Safe Place, Sustainability Resource Center, Regional Testing Center and the Call Center. The result will be permanent space for all of these Student Services programs.
- **Law Enforcement Training Center \$16M:** This project would complete the Public Safety Training Area by constructing an indoor firing range.
- **Remove Student Services Portables \$500K**