

Measure J Project Update



05/29/2024



Projects In Progress Series B

- Science
- Infrastructure
- IS&T Upgrades

Sidewalk/Lighting Improvements

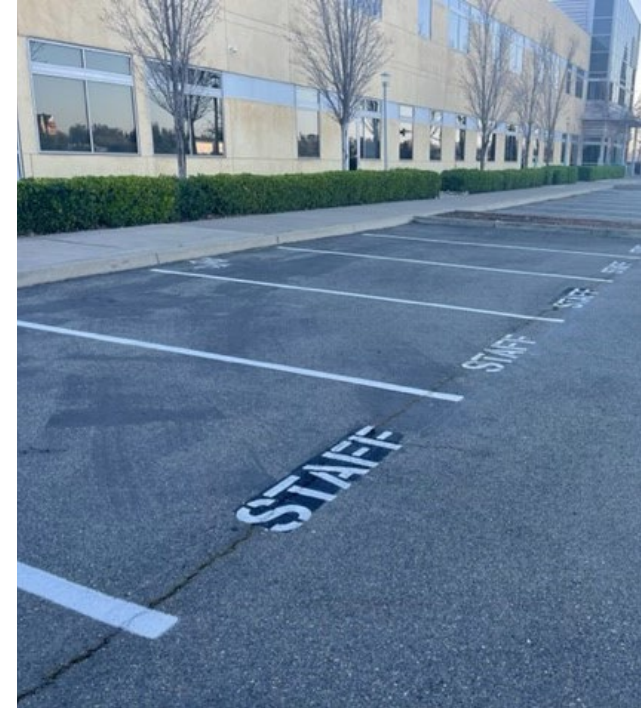
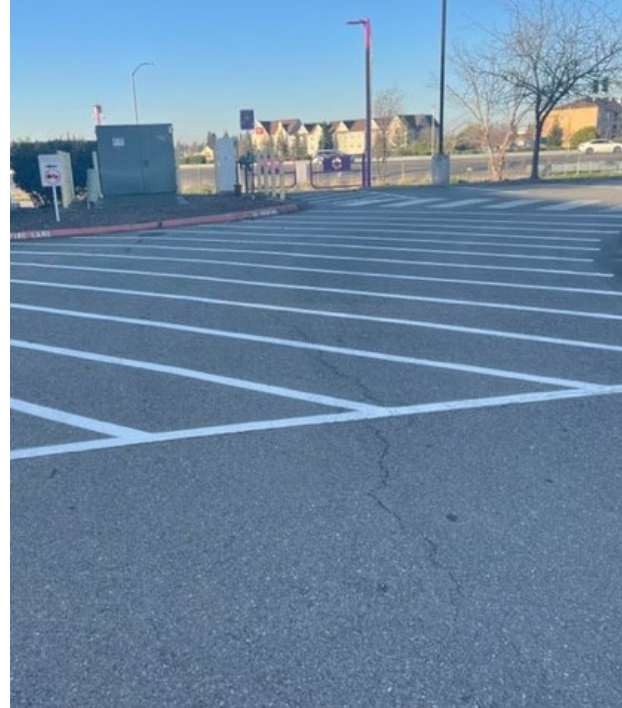




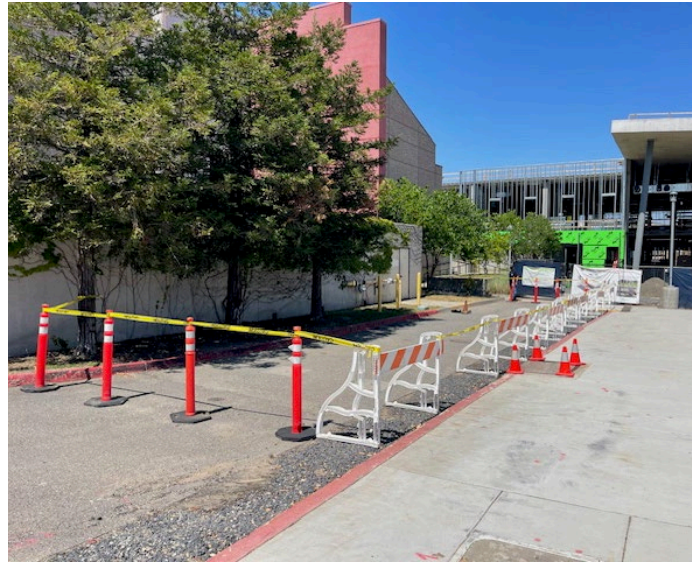
Sidewalk Improvement



Pathway to New Science from Lot 4



- CHC and Skyway Center Repaint Parking Lot Lines/Curbs, Etc.

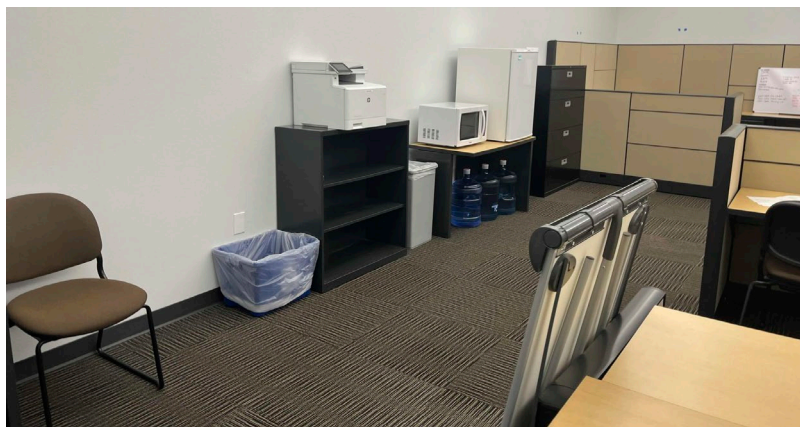


Storm Drain Repairs

IS&T Upgrades

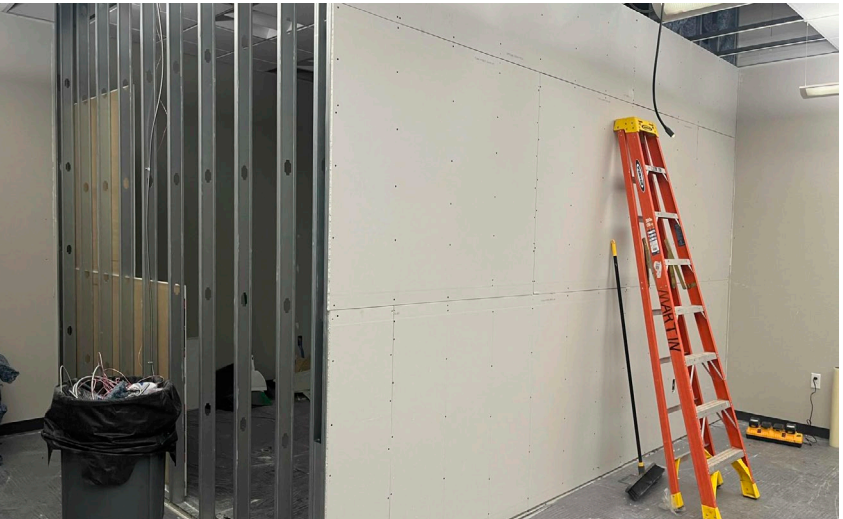
- **Consolidation of Departments**
- **Continue Technology Equipment Lifecycle Refresh & Replacement**
- **Infrastructure Upgrades**
- **Protection of Districts Backup Systems Chico Center aka Backup Generator**





Information Technology Services

Information Technology Services



Projects in Series C - \$50M

- **Science - \$41.5M**
- **Ag and Natural Resources Remodel Planning - \$500K**
- **IST Upgrades - \$2M**
 - Support New Science Building
 - Support Physical Science Remodel
 - Smart Classroom Technology
 - Replace older failing switches
 - Technology Infrastructure
- **Facilities Infrastructure - \$6M**
 - Infrastructure for Science & Planetarium
 - Infrastructure for Physical Science Remodel
 - Parking Lot and Sidewalk Repairs
 - Energy Projects (Lighting, Solar, Commissioning, EV Stations)
 - ADA Pathway Improvements
 - Fire Alarm System and Emergency Notification Replacement





Science Schedule

Construction Phase – April 2023 – May 2025

Substantial completion May 2025

Final Completion July 2025

Classes Begin – August 2025

New Science Building



Science Innovation

Starts Here

▶ Lab/lecture spaces

- Microbiology
- Anatomy
- Physiology
- Zoology/Botany
- Geology
- Astronomy
- Meteorology
- Physics
- Chemistry

▶ Two lecture classrooms

▶ A cadaver room

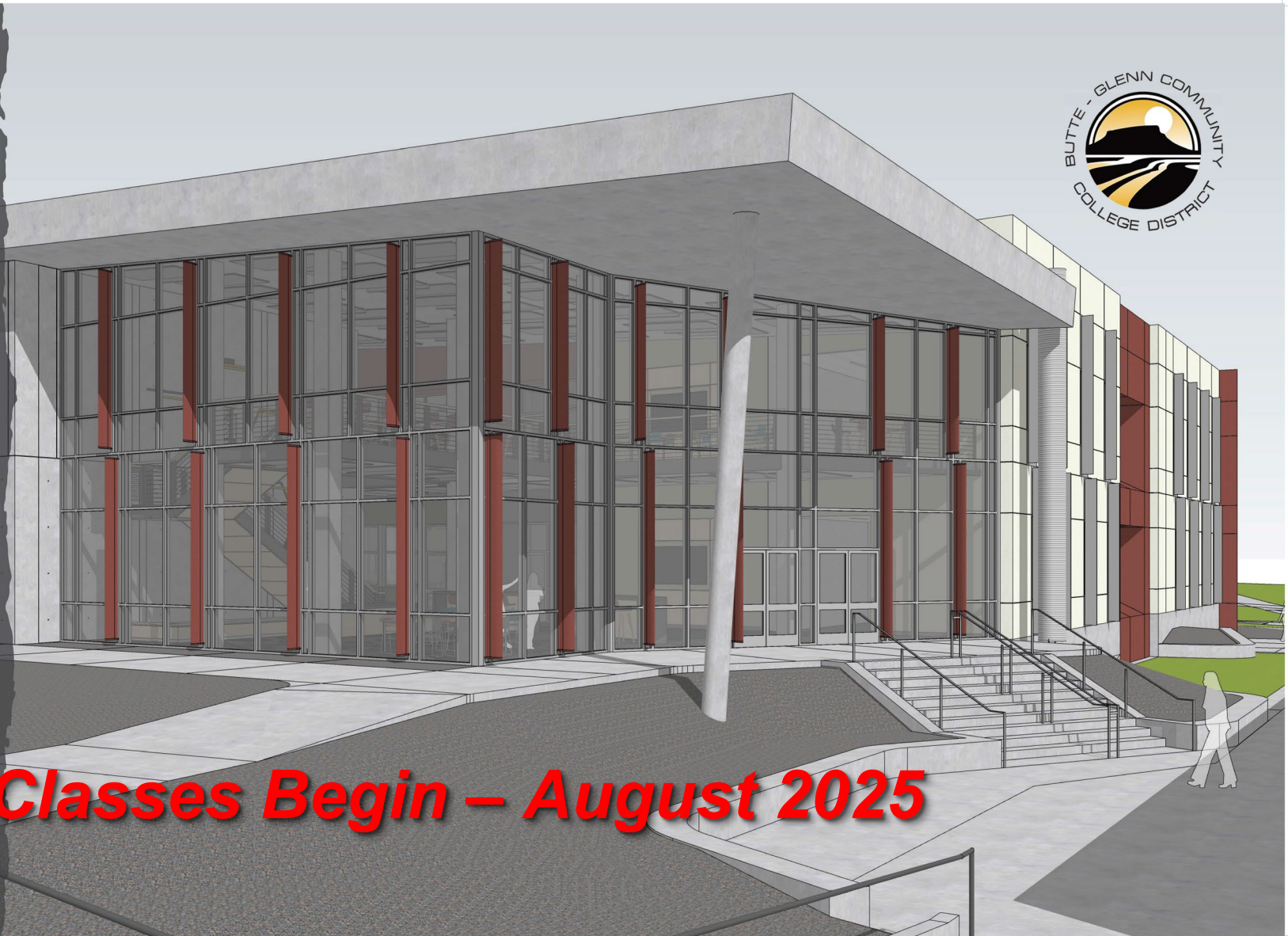
▶ Collaborative learning spaces

▶ 38 faculty offices

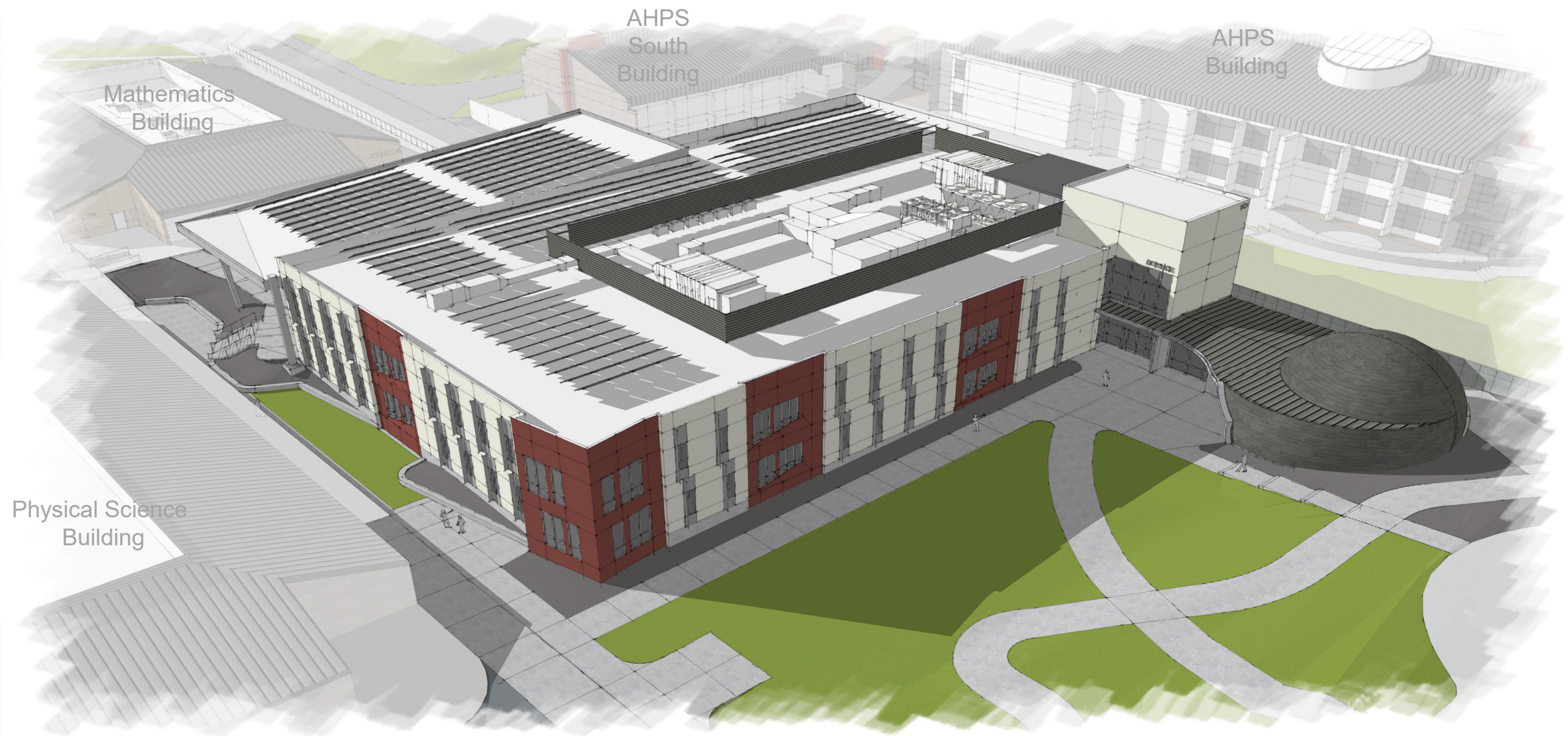
▶ 72,276 square-foot facility

▶ 2,400 square-foot planetarium

Classes Begin – August 2025



Science Building Aerial View





Science Construction Continues



Science Milestone: Beam Signing

Watch the Progress

Butte College - Science Building & Planetarium CAM 1

<https://cams.clarksullivan.com/butte1>

Butte College - Science Building & Planetarium - CAM2

<https://cams.clarksullivan.com/butte2>



Ag and Natural Resources | Project Schedule

1. Programming / Existing Building Review Complete
2. Preliminary Plans Phase Complete
3. Construction Drawings Complete
4. Submission of Drawings to DSA April 18, 2024
5. Bidding / Board Approval October 2024 – January 2025
6. Pre-Construction: Submittals / Procurement February 2025 – August 2025
7. Construction September 2025 – September 2026
8. District Move-In October 2026 – December 2026
9. Classes Begin January 2027

Physical Science Remodel aka Agriculture and Natural Resources Building



Agriculture and Natural Resources Building



Agriculture and Natural Resources Building



Agriculture and Natural Resources Building



Agriculture and Natural Resources Building





[This Photo](#) by Unknown Author is licensed under [CC BY-NC](#)

Life
Science
Remodel
2028

Life Science/Student Services | Project Schedule

1. Programming / Existing Building Review January 2025 – May 2025
2. Preliminary Plans Phase May 2025 – August 2025
3. Construction Drawings August 2025 – January 2026
4. DSA Project Review October 2025 – June 2026
5. Bidding / Board Approval June 2026 – October 2026
6. Pre-Construction: Submittals / Procurement October 2026 – March 2027
7. Construction March 2027 – April 2028
8. District Move-In May 2028 – August 2028
9. Program Open for Business August 2028

Life Science Remodel aka Student Services



BUTTE COLLEGE CAMPUS MAP



Exit to Clark Rd., Paradise, Oroville, & Hwy 70

SKYWAY CENTER
2480 Notre Dame Blvd., Chico, CA 95928

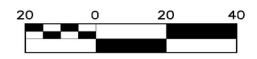
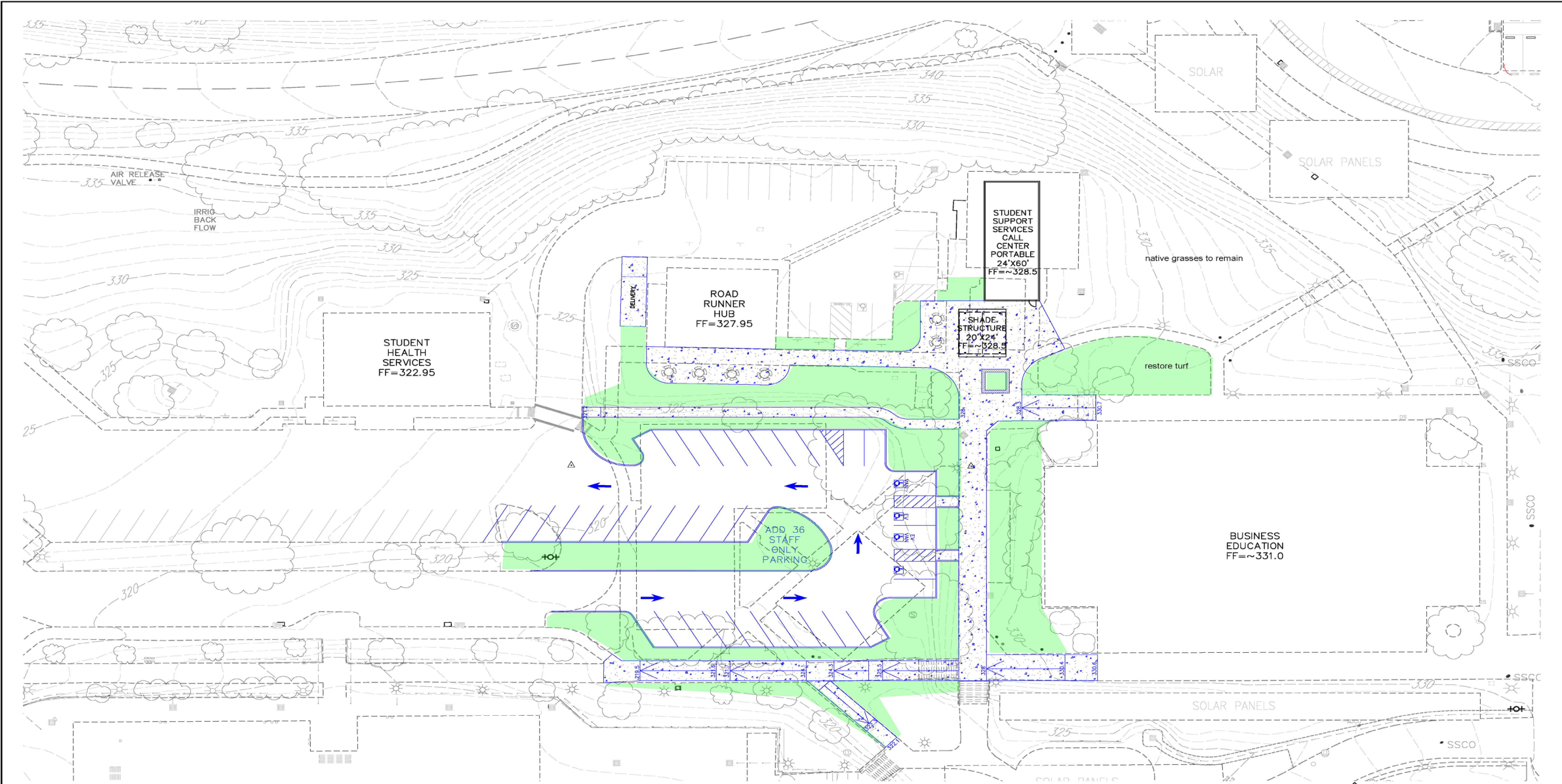


GLENN COUNTY CENTER
1366 Cortina Dr., Orland, CA 95963



CHICO CENTER
2320 Forest Ave., Chico, CA 95928





Designed:	Revision	Date	By
RMS			
Drawn By:			
RMS			
Approved:			
Date:			
4-29-24			


NORTHSTAR
 ... Designing Solutions
111 MISSION RANCH BLVD. SUITE 100, CHICO, CA 95928
 PHONE: (530) 893-1000 www.northstarinc.com

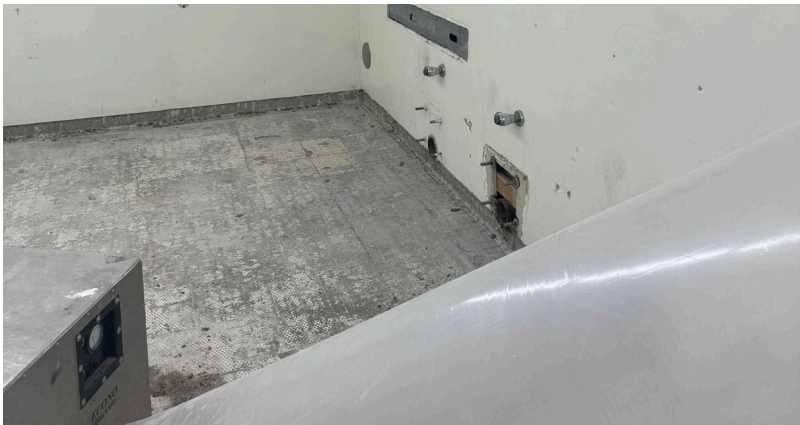
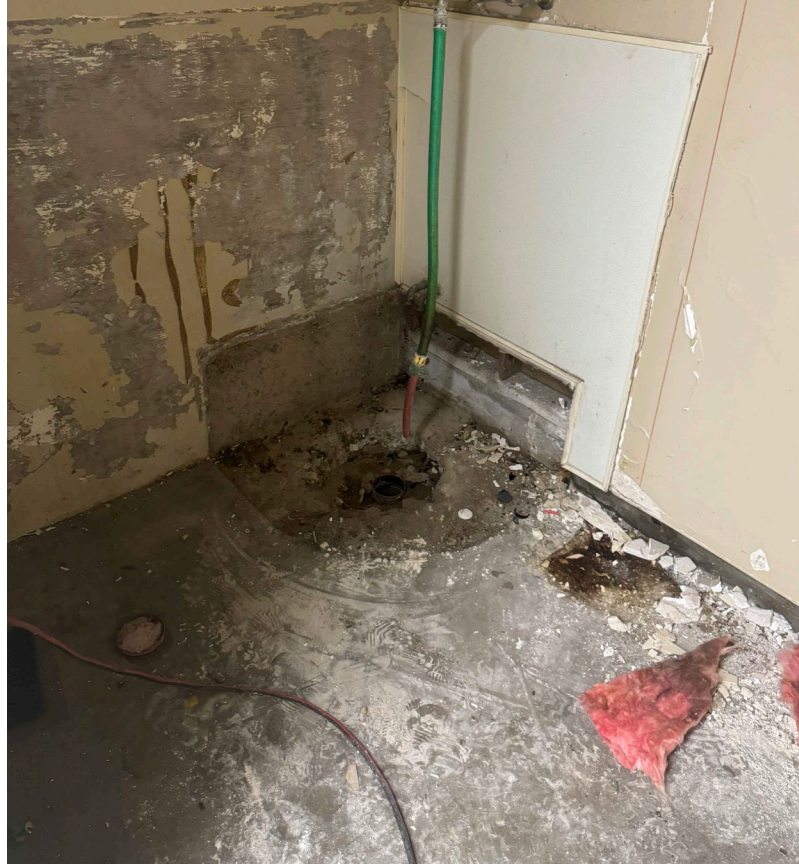
BUTTE COLLEGE
PARKING LOT 3
OROVILLE, CALIFORNIA

MASTER PLAN OPTION #2
BUTTE COLLEGE

APN Number NA	Job Number 24-009	1" = 20' Horz. Scale	NA Vert. Scale	Sheet 1 Of 1
------------------	----------------------	-------------------------	-------------------	--------------



Ag Repair Hazardous Waste



Gym Restroom Renovation

Construction Challenges

- **Maintaining Established Bond Project Budgets without jeopardizing scope**
- **DSA**
- **PGE Scheduling & Commitments**
- **Labor Shortages**
- **Skilled Trained Workforce Requirements**
- ***Hard Bid***
 - Managing Change Orders – Industry Standard is 15 – 30%
- **Material Lead Times**
- **Cost Escalation/Changes in Economy**
 - Material prices have not leveled out
 - Shipment Delays
 - Trade Tariffs

Our Plan

- Consider all construction delivery systems and choose based on what is best for the District at the time. (Not one size fits all)
- Manage project budgets by “designing” to the budget and include cost escalations in the budget
- Utilize District Standards and focus on total cost of ownership when designing of the building.
- KISS every project (Keep It Simple Strategy)



Cash Flow Spreadsheet

Remaining Bond Project Sequence

Series D (May 2025 – May 2028) - \$27.5M

- Physical Science Remodel - \$12.5M
- Life Science Remodel for Veterans and Student Services - \$10M
- Removal of Portables for Veterans and Student Services - \$500K
- I.T. Upgrades - \$2M
- Facilities Infrastructure Upgrades - \$2.5M

Series E (May 2028 – May 2030) - \$21M

- Law Enforcement Training Center - \$16M
- Athletics - \$1.5M
- Facilities Infrastructure Upgrades - \$1M
- I.T. Upgrades - \$2.5M

ID	Task Name	Duration	Start	Finish	2016		2017		2018		2019		2020		2021		2022		2023		2024		2025		2026		2027		2028		2029		2030		2031		2032	
					H2	H1	H2	H1	H2	H1	H2	H1	H2	H1	H2	H1	H2	H1	H2	H1	H2	H1	H2	H1	H2	H1	H2	H1	H2	H1	H2	H1	H2	H1	H2	H1	H2	
1	Bond Approved	1 day	Tue 11/8/16	Tue 11/8/16																																		
2	Arrange Funds - Series A	40 days	Thu 11/10/16	Wed 1/4/17																																		
3	Arrange Funds - Series B	45 days	Mon 4/1/19	Fri 5/31/19																																		
4	Arrange Funds - Series C	21 days	Fri 7/1/22	Fri 7/29/22																																		
5	Skyway Remodel	591 days	Fri 3/24/17	Thu 6/27/19																																		
7	Welding Building	675 days	Mon 4/3/17	Thu 10/31/19																																		
9	Athletics	3465 days	Mon 10/2/17	Mon 12/30/30																																		
10	Field House/Press Box	556 days	Mon 10/2/17	Sat 11/16/19																																		
11	Athletics Phase II	780 days	Thu 1/6/28	Mon 12/30/30																																		
12	Technology/Math Renovation	790 days	Wed 10/16/19	Fri 10/21/22																																		
14	Scenario Village	621 days	Mon 6/3/19	Fri 10/15/21																																		
16	Science Building	1070 days	Thu 7/1/21	Thu 7/31/25																																		
17	Science Building Construction	612 days	Mon 4/3/23	Thu 7/31/25																																		
18	Physical Science Remodel	873 days	Fri 9/1/23	Thu 12/31/26																																		
21	Life Science Remodel	983 days	Tue 10/1/24	Fri 6/30/28																																		
22	LS Design	547 days	Tue 10/1/24	Sun 11/1/26																																		
23	LS Construction	415 days	Tue 12/1/26	Fri 6/30/28																																		
24	Law Enforcement Training Center	939 days	Sat 5/1/27	Sun 12/1/30																																		
25	LETC Design	480 days	Sat 5/1/27	Wed 2/28/29																																		
26	LETC Construction	458 days	Thu 3/1/29	Sun 12/1/30																																		
27	Remove Portables	283 days	Mon 7/3/28	Tue 7/31/29																																		
28	Facilities Infrastructure	3194 days	Mon 4/16/18	Sun 6/30/30																																		
29	Infrastructure Series A	957 days	Mon 4/16/18	Fri 12/10/21																																		
30	Infrastructure Series B	1328 days	Sat 6/1/19	Sun 6/30/24																																		
31	Infrastructure Series C	784 days	Fri 6/2/23	Sun 5/31/26																																		
32	Infrastructure Series D	785 days	Sun 6/1/25	Wed 5/31/28																																		
33	Infrastructure Series E	544 days	Thu 6/1/28	Sun 6/30/30																																		
34	IT Upgrades	3614 days	Mon 9/5/16	Sun 6/30/30																																		

Project Bond Allocations - \$190M

- **Welding Building \$23M:** Complete
- **Skyway Center Remodel \$2.5M:** Complete
- **Scenario Village \$1M:** Complete
- **Technology Building Remodel \$5M:** Complete
- **Athletics \$12M:**
 - **Phase I - \$10.5M** – Complete
 - **Phase II - \$1.5M** – Athletic Program Needs
- **Facilities Infrastructure \$23M:** This project replaces the PVC gas lines, broken storm drains and sewer lines, improves deteriorated parking lots and service roads, and makes upgrades to meet newer accessibility requirements, mechanical repairs, energy efficiency projects.
- **I.T. Upgrades \$11M:** This project updates the College's technology infrastructure to alleviate information security issues and provides instruction technology to meet faculty and student needs.
- **Science Building \$73.5M:** This project provides a new Sciences Building that meets current and projected needs for the Physical and Life Science programs.
- **Physical Science Remodel \$12.5M:** This project will renovate the existing Physical Science building to accommodate classroom space for Agriculture, Natural Resources, Horticulture and MESA Programs
- **Life Science Remodel for Veterans and Student Services \$10M:** This project will renovate the existing Life Science building to accommodate the Student Services Programs to include Veterans Center. The result will be permanent space for Student Services programs.
- **Law Enforcement Training Center \$16M:** This project would complete the Public Safety Training Area.
- **Remove Student Services Portables \$500K**



**Let's Take a
Tour**