

Measure J Update

10/21/2020

Series A (2017 – 2020)

What is left

- Overlay of Parking Lot 4 – Complete
- Service road repair Phase II – Complete
- Waste Water Treatment Plant Dredging/Disposal - Complete
- Energy Assessment – Complete
- HVAC repairs/replacements – This will continue as needed in Series B
 - HVAC Replacement Equipment with R22 (50 of 52 Remaining to do)

Demolition of Old Welding



Demolition of Old Welding



Demolition of Old Welding



Parking Lot 4



Parking Lot 4



Service Road Repair



Service Road Repair



Service Road Repair



Service Road Repair



Energy Audit Results

- Total estimated cost of these measures is \$1,208,460
- Available incentives for the measures amount to \$47,200, which could further reduce costs to \$1,161,260
- Annual cost savings if all measures were implemented are \$85,400
- Simple payback for all the measures combined is 13.6 years inclusive of incentives

		Estimated						
	Measure Description	kWh Saved	PeakkW Reduced	Therms Saved	Annual Cost Savings	Rebate/ Incentive	Project Cost	SPB (yrs)
1	Comprehensive Retrocommissioning	90,600	3	9,900	\$28,926	\$10,600	\$104,500	3.2
2	Interior Lighting LED Upgrade	186,500	24	0	\$39,165	\$26,000	\$717,970	17.7
3	Exterior Lighting LED Upgrade	17,000	0	0	\$3,570	\$2,000	\$27,500	7.1
4	Water Cooled Chiller Upgrade at a Allied Health	45,800	1	0	\$9,618	\$5,700	\$267,520	27.2
5	Blower and Controls Upgrade at Sewer Treatment Plant	15,000	1	0	\$3,150	\$2,000	\$78,650	24.3
6	Gym High Bay Lighting LED Upgrade	4,700	1	0	\$987	\$900	\$12,320	11.6
7	Install new solar to offset 95% Load KAPC						No Estimated Cost	
8	Include solar for New Science Building						No Estimated Cost	

Implementation of Series B (2020 – 2023)

- Athletics
 - Baseball Field Renovation – Complete
- Technology Swing Space
 - Portable Installation – September 2020
 - Move program from TE Building to Portables – December 2020
- Technology Remodel (State Funds \$7M Bond Funds \$3M)
 - DSA Back Check – October 1, 2020
 - DSA approval of plans – November 2020
 - Bidding Process – November 2020 – January 2021
 - Construction begins – March 2021 (10 month construction)
 - Project complete – January 2022
 - Program move in – June 2022
- Scenario Village (Construction Phase I/Phase II)
 - Phase I
 - Bid/Construction of underground infrastructure – September 2020 – April 2021
 - Phase II - Buildings
 - DSA submittal – November 2020
 - DSA approval – March 2021
 - Bidding – March 2021
 - Construction begins – May 2021
 - Project Complete – August 2021

Baseball Field Renovation



Baseball Field Renovation



Baseball Field Renovation



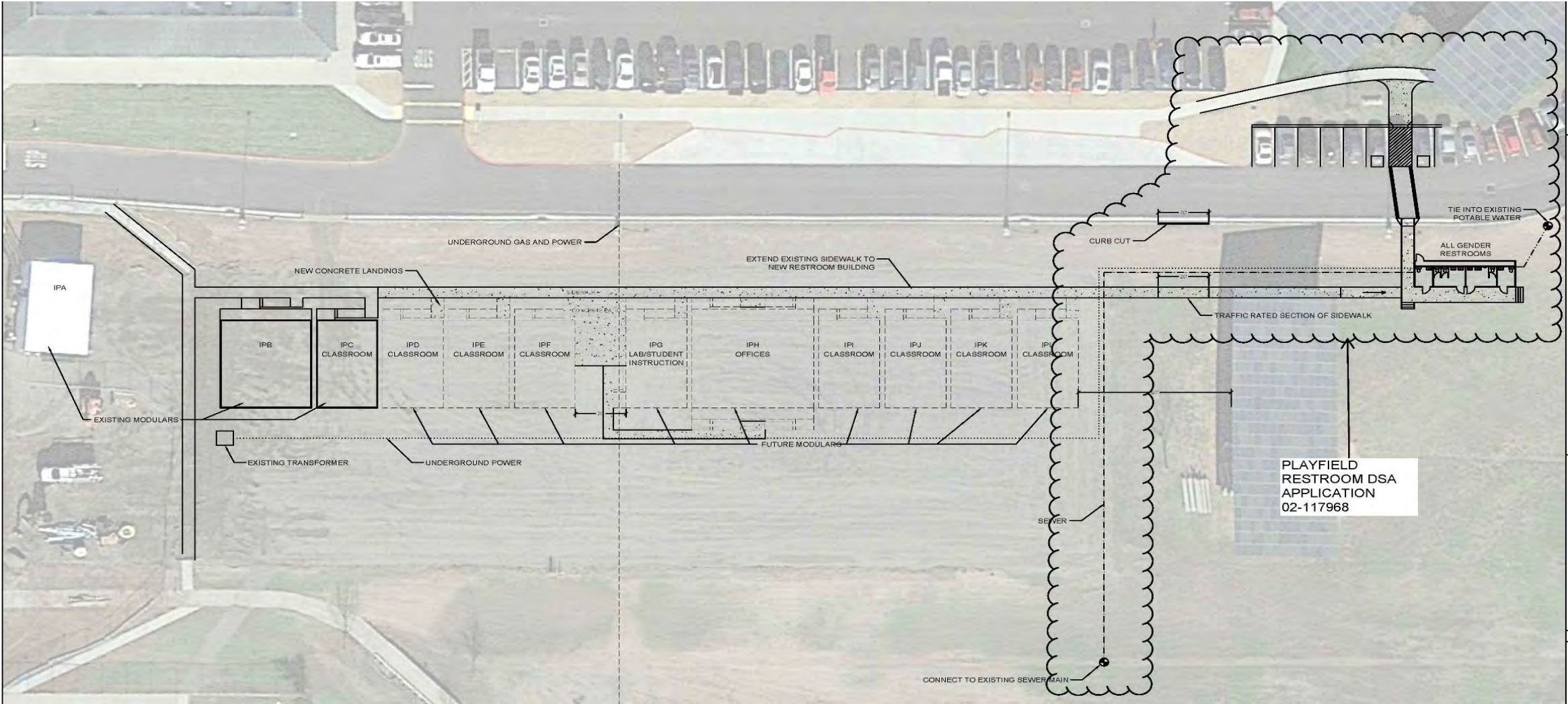
Baseball Field Renovation



Baseball Field Renovation



Technology Remodel Swing Space



Technology Remodel Swing Space



Technology Building Remodel



Technology Building Remodel



Technology Building Remodel



Technology Building Remodel



Scenario Village



Scenario Village



Scenario Village



Scenario Village



Scenario Village



Scenario Village



Implementation of Series B (2020 – 2023)

- Science Building (Planning Spring 2021)
 - Tour of Chico State Science Building – September 2020
 - Future Tour of Solano College – November 2020
 - Program Planning Verification – January 2021
 - RFQ for Design Build Team – December 2020
 - Phase I – Demo and Site Preparation
- IT Upgrades
 - **Smart Classrooms:**
 - Complete the refresh of classroom technologies to current standard. There are 26 classrooms remaining:
 - **Phones/Voip:** - Replace the dead UPS systems and batteries that provide power to the network switches supporting our phones and WAPs on campus. - Winter 2020
 - **Network** - Replace aging network switches connected to the server and storage equipment in the data centers to increase backbone switching capacity, provide better redundancy and allow for future disaster recovery design options. – Summer 2021
 - **Servers/Infrastructure** - Server lifecycle replacement for 15 servers - 2021. These server support our infrastructure.
 - **Continue Computer LifeCycle Refresh**

Implementation of Series B (2020 – 2023)

- Facilities Infrastructure Upgrade
 - ADA Assessment – Continue Repairs
 - ADA Path of Travel Upgrades
 - Storm Drain Repairs Phase III (Parking Lot 4) – Design – January 2021
 - Gasline Repairs (AHPS/Tech/LS/PS/LRC) Phase III – Design/Construction April 2021
 - Pump House #2 – Fire Protection – Bid/Construction – October 2020 – April 2021
 - Campus Drive Overlay
 - Bid – February 2021
 - Construction – May – August 2021
 - Replacement of underground storage tank with above ground tanks
 - Design/Bid – Fall 2020
 - Construction – Summer 2021
 - Roof Repairs
 - Library/Media Center – Summer 2021
 - Business Education – Summer 2021
 - Arts
 - CDC
 - HVAC repairs/replacements –
 - HVAC Replacement Equipment with R22 (50 46 Remaining)
 - Library 1 Unit – October 2020
 - Media Center 3 Units – November 2020

Science Building Tour



2016 – Accessibility Survey was conducted

- 6,788 findings throughout all campus locations
- Majority of the findings:
 - Furniture too close to doors
 - Signage at the wrong height or missing
 - House keeping
 - Door closer push weight too high
 - Path of travel slopes and obstructions
 - Toilet accessories placement incorrect height
- Where are we with progress?
 - 1,172 completed
 - 2,507 In progress of being repaired or a plan in place to address
 - 3,109 Still being analyzed (in-house/contract out)

Samples of findings



Accessory at wrong height



Should have signage next to door with brail

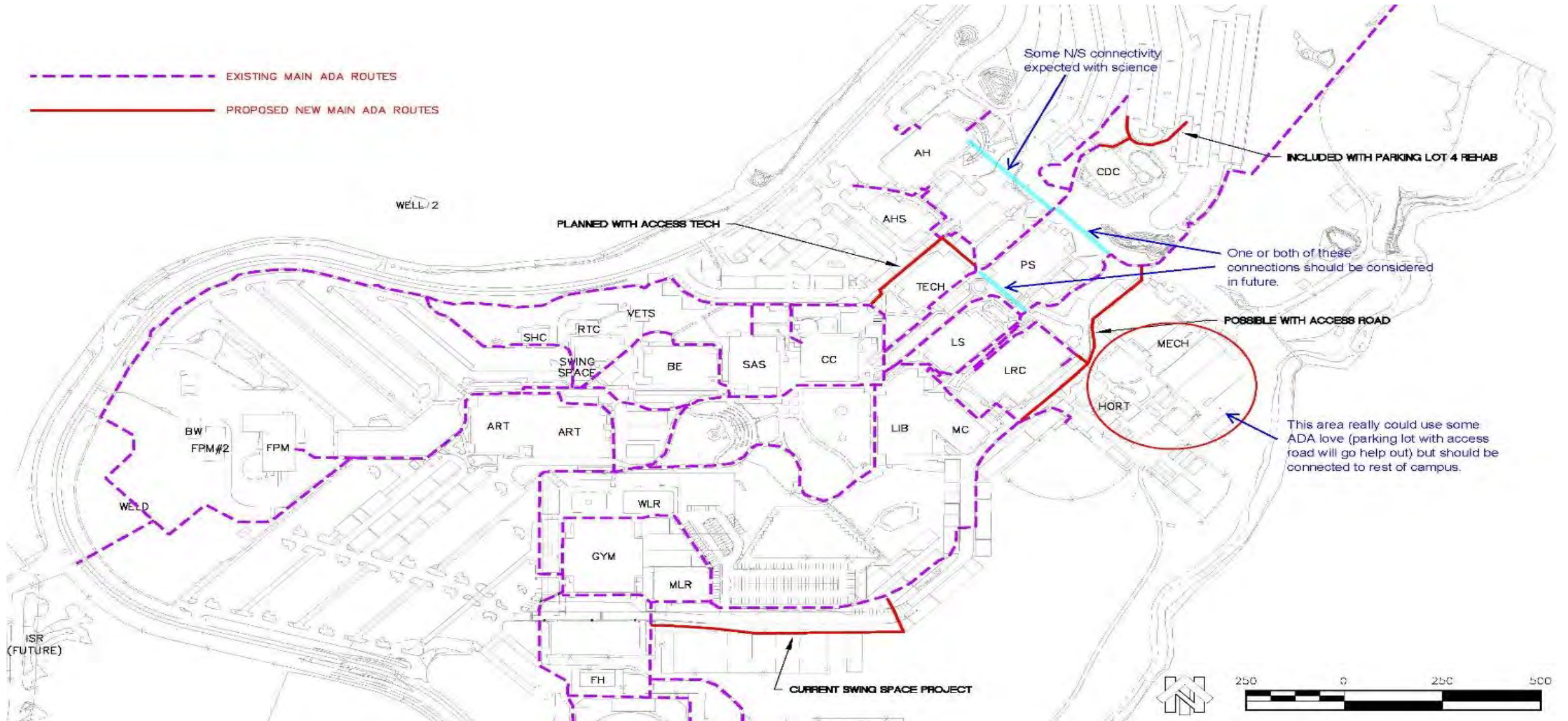


Door closing pressure too high

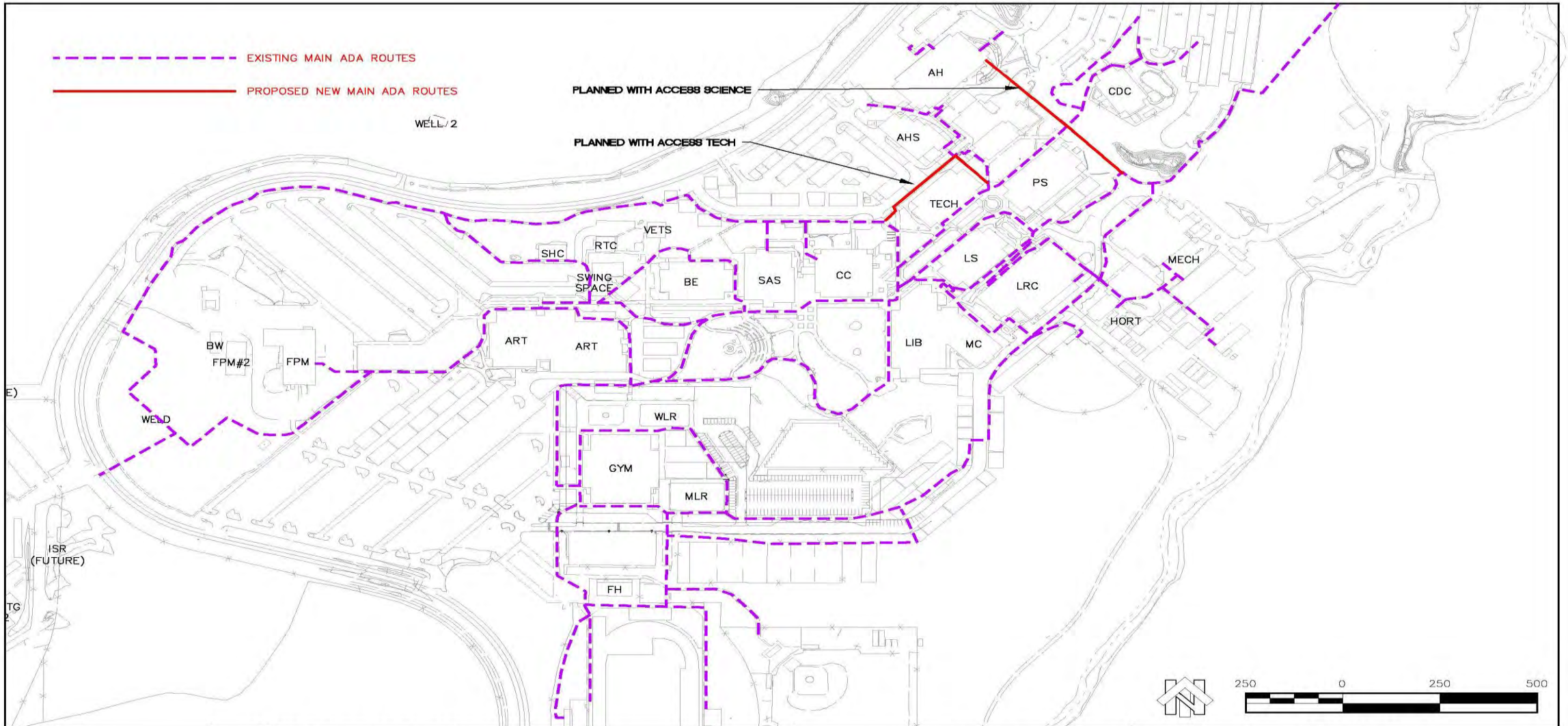


Need 12-18" clear on strike side of door and 60" clear in front

ADA Upgrades – Before Service Road



ADA Upgrades – After Service Road



Designed:
 Drawn By: RMS
 Approved:
 Date: 10-06-2020



111 MISSION RANCH BLVD. SUITE 100, CHICO, CA 95926
 PHONE: (530) 893-1600 www.northstareng.com

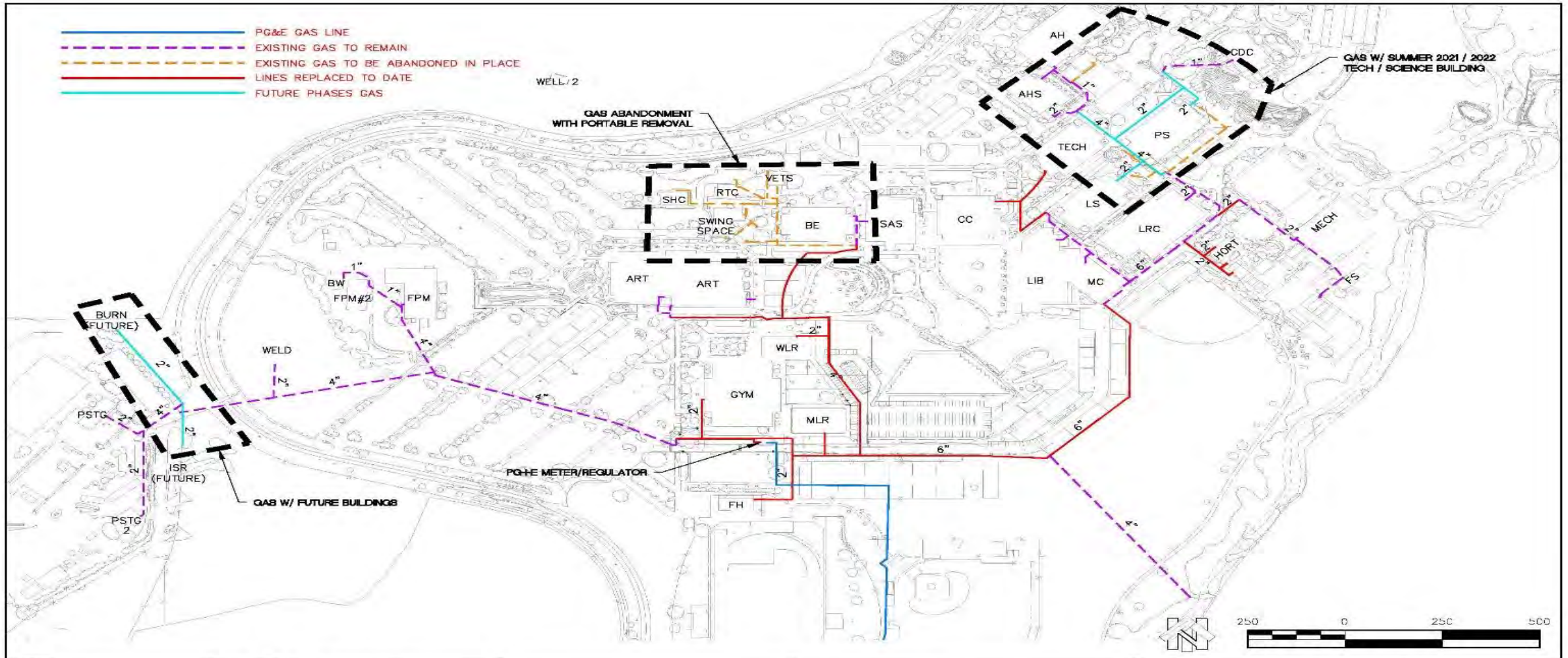
BUTTE COLLEGE
 3536 BUTTE CAMPUS DRIVE
 CHICO, CALIFORNIA

ADA EXHIBIT

BUTTE COLLEGE

APN Number 000-000-000	Job Number 16-279	Scale 1" = 250' Horz. N/A Ver.	Sheet 1 Of 1
---------------------------	----------------------	---	--------------

Infrastructure Upgrades – Next Phase



Designed:	
Drawn By:	RMS
Approved:	
Date:	10-6-2020

NORTHSTAR
... Designing Solutions

111 MISSION RANCH BLVD SUITE 120, CHICO, CA 95926
PHONE: (530) 898-1000 www.northstareng.com

BUTTE COLLEGE
3536 BUTTE CAMPUS DRIVE
CHICO, CALIFORNIA

GAS EXHIBIT			
BUTTE COLLEGE			
APN Number 000-000-000	Job Number 16-279	Scale 1"=250' Horz. N/A Vert.	Sheet 1 of 1

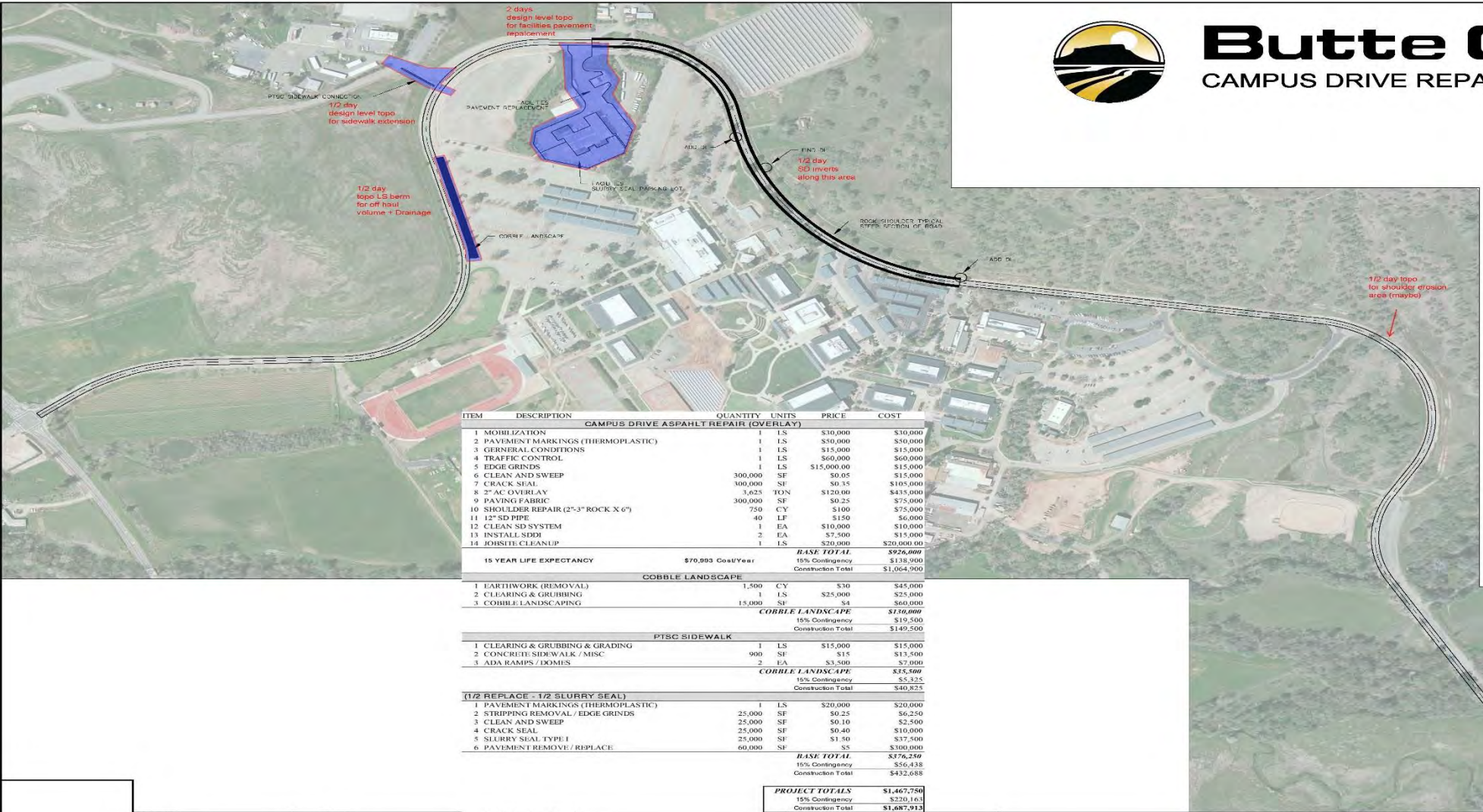
Pump House #2 Replacement



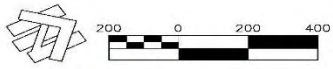
Campus Drive Overlay



Butte College CAMPUS DRIVE REPAIR PROJECT



ITEM	DESCRIPTION	QUANTITY	UNITS	PRICE	COST
CAMPUS DRIVE ASPHALT REPAIR (OVERLAY)					
1	MOBILIZATION	1	LS	\$30,000	\$30,000
2	PAVEMENT MARKINGS (THERMOPLASTIC)	1	LS	\$30,000	\$30,000
3	GENERAL CONDITIONS	1	LS	\$15,000	\$15,000
4	TRAFFIC CONTROL	1	LS	\$60,000	\$60,000
5	EDGE GRINDS	1	LS	\$15,000.00	\$15,000
6	CLEAN AND SWEEP	300,000	SF	\$0.05	\$15,000
7	CRACK SEAL	300,000	SF	\$0.35	\$105,000
8	2" AC OVERLAY	1,625	TON	\$120.00	\$445,000
9	PAVING FABRIC	300,000	SF	\$0.25	\$75,000
10	SHOULDER REPAIR (2"-3" ROCK X 6")	750	CY	\$100	\$75,000
11	12" SD PIPE	40	LF	\$150	\$6,000
12	CLEAN SD SYSTEM	1	EA	\$10,000	\$10,000
13	INSTALL SDDI	2	EA	\$7,500	\$15,000
14	JOBSITE CLEANUP	1	LS	\$20,000	\$20,000.00
15 YEAR LIFE EXPECTANCY		\$70,993 Cost/Year		15% Contingency	\$138,900
				BASE TOTAL	\$936,000
				15% Contingency	\$138,900
				Construction Total	\$1,064,900
COBBLE LANDSCAPE					
1	EARTHWORK (REMOVAL)	1,500	CY	\$30	\$45,000
2	CLEARING & GRUBBING	1	LS	\$25,000	\$25,000
3	COBBLE LANDSCAPING	15,000	SF	\$4	\$60,000
				COBBLE LANDSCAPE	\$70,000
				15% Contingency	\$19,500
				Construction Total	\$149,500
PTSC SIDEWALK					
1	CLEARING & GRUBBING & GRADING	1	LS	\$15,000	\$15,000
2	CONCRETE SIDEWALK / MISC	900	SF	\$15	\$13,500
3	ADA RAMPS / DOMES	2	EA	\$3,500	\$7,000
				COBBLE LANDSCAPE	\$35,000
				15% Contingency	\$5,225
				Construction Total	\$40,825
(1/2 REPLACE - 1/2 SLURRY SEAL)					
1	PAVEMENT MARKINGS (THERMOPLASTIC)	1	LS	\$20,000	\$20,000
2	STRIPPING REMOVAL / EDGE GRINDS	25,000	SF	\$0.25	\$6,250
3	CLEAN AND SWEEP	25,000	SF	\$0.10	\$2,500
4	CRACK SEAL	25,000	SF	\$0.40	\$10,000
5	SLURRY SEAL TYPE I	25,000	SF	\$1.50	\$37,500
6	PAVEMENT REMOVE / REPLACE	60,000	SF	\$5.00	\$300,000
				BASE TOTAL	\$376,250
				15% Contingency	\$56,438
				Construction Total	\$432,688
				PROJECT TOTALS	\$1,467,750
				15% Contingency	\$220,163
				Construction Total	\$1,687,913



Designed:	FMS	Revision		Date		By	
Drawn By:	FMS						
Approved:							
Date:	9-23-2020						



DSA APPLICATION
NUMBER: NA

BUTTE COLLEGE
3536 BUTTE CAMPUS DRIVE
OROVILLE, CALIFORNIA

PROJECT SCOPING			
BUTTE COLLEGE CAMPUS DRIVE			
APN Number NA	Job Number TBA	Scale 1" = 200' Horiz.	Sheet <u> </u> Of <u> </u>
N/A	Vert.		

E:\PROJECTS\2020\19-20 BUTTE COLLEGE CAMPUS DRIVE REPAIR\1920\CAD\CAMPUS DRIVE 2020.DWG 07/27/20 - REVISED

Underground Storage Tank Removal/Replacement



Underground Storage Tank Removal/Replacement



Construction Challenges

- COVID-19
 - Workload Impact on District Staff
 - New Procedures to work on our campus
 - Possibility of a project shutdown
 - Lack of inspector presence on projects
 - Lack of materials/supplies/deliveries etc.
- Skilled Workforce
 - New Requirements for Community Colleges January 2020
 - Shortage of workers and skilled workers
- DSA
 - Short handed – lack of review – working remotely (COVID Related)
 - Potential delay of plan approvals
 - Implementation of New IR's
 - New Seismic Review (Buildings Built prior to 1970 earthquake)
 - New Wildfire Designations
- Cost Escalation – When is it coming????



Main Goal – Keep Construction Going Safely!



Cash Flow

Bond Oversight Expenditure Yearly Reports - Actuals (Detailed)

	Revised	Project	2016-2017 Series A	2017-2018 Series A	2018-2019 Series A	2019-2020 Series A	2020-2021 Series A	2019-2020 Series B	2020-2021 Series B	Status	Percentage Spent/Encumbered
Measure J Project											
Welding Building	\$ 23,000,000	\$ -	\$ 23,000,000.00	\$ 136,953.37	\$ 3,253,242.54	\$ 14,842,860.96	\$ 4,236,239.82	\$ 529,639.04	\$ -	Complete	
Skyway Center Remodel	\$ 5,000,000	\$ -	\$ 2,500,000.00	\$ 100,612.50	\$ 1,645,924.20	\$ 647,983.06	\$ 51,134.04	\$ 28,722.60	\$ -	Complete	
Athletics	\$ 12,000,000	\$ -	\$ -	\$ -	\$ -	\$ -	\$ -	\$ -	\$ -		
Field House/Pressbox											
Series A			\$ 7,500,000.00	\$ 150,289.59	\$ 4,444,949.87	\$ 3,666,862.27	\$ -	\$ -	\$ -	Complete	
Series B			\$ 3,000,000.00	\$ -	\$ -	\$ -	\$ -	\$ 2,999,999.46	\$ -	Complete	
Facilities Infrastructure	\$ 21,700,000	\$ -	\$ -	\$ -	\$ -	\$ -	\$ -	\$ -	\$ -		
Utility Infrastructure (Includes Walkway Lighting)											
Series A		\$ -	\$ 4,200,000.00	\$ 41,444.00	\$ 366,625.16	\$ 812,721.78	\$ 2,858,052.79	\$ 120,215.08	\$ -		
Storm Drain Repair/Replacement (Campus Wide)				\$ -	\$ -	\$ -	\$ -	\$ -	\$ -	In progress	
Campus Infrastructure				\$ -	\$ -	\$ -	\$ -	\$ -	\$ -	In progress	
Gasline Replacements										In progress	
Communication/Utility Line Repairs										In progress	
Emergency Lighting Repairs										In progress	
Sidewalk Repairs/ADA Sidewalk Upgrades										In progress	
Sewerline and Septic Repairs/Replacement (Campus Wide)										In progress	
Roadway/Parking Lot Repairs/Refurbish										In progress	
Irrigation Failures										In progress	
Building Water Intrusion Repairs										In progress	
Electrical Infrastructure Repairs										In progress	
Roofing Systems Repairs/Replacements										In progress	
Energy Assessment										Complete	
Series B		\$ 6,000,000.00						\$ 290,063.60	\$ 3,298,935.22	In Progress	
Paving/ADA Construction	\$ -	\$ -	\$ 2,800,000.00	\$ 523,431.66	\$ 1,521,050.95	\$ -	\$ -	\$ -	\$ -		
Athletic Parking Lot/Service Road										Complete	
IT Upgrades	\$ 11,000,000	\$ -	\$ -	\$ -	\$ -	\$ -	\$ -	\$ -	\$ -		
Series A			\$ 2,000,000.00	\$ 244,031.33	\$ 988,390.03	\$ 755,097.38	\$ 12,481.00	\$ -	\$ -	Complete	
Series B			\$ 2,500,000.00	\$ -	\$ -	\$ -	\$ -	\$ 585,062.70	\$ 12,407.08		
Science Building	\$ 73,000,000	\$ -	\$ -	\$ -	\$ -	\$ -	\$ -	\$ -	\$ -		
Series B			\$ 32,000,000.00	\$ -	\$ -	\$ -	\$ -	\$ -	\$ 105,608.01	In progress	
Life Science Remodel	\$ 10,000,000	\$ -	\$ -	\$ -	\$ -	\$ -	\$ -	\$ 10,060.00	\$ -		
Physical Science Remodel	\$ 10,000,000	\$ -	\$ -	\$ -	\$ -	\$ -	\$ -	\$ -	\$ -		
Technology Building Remodel	\$ 6,800,000	\$ -	\$ 5,000,000.00	\$ -	\$ -	\$ -	\$ -	\$ 1,126,188.90	\$ 769,847.87	In progress	
Scenario Village	\$ 1,000,000	\$ -	\$ 1,000,000.00	\$ -	\$ -	\$ -	\$ -	\$ 450,930.55	\$ 728,265.80	In progress	
Law Enforcement Training Center	\$ 16,000,000	\$ -	\$ -	\$ -	\$ -	\$ -	\$ -	\$ -	\$ -		
Remove Portables	\$ 500,000	\$ -	\$ -	\$ -	\$ -	\$ -	\$ -	\$ -	\$ -		
Totals	\$ 190,000,000	\$ -	\$ 42,000,000.00	\$ 523,041.20	\$ 6,927,903.18	\$ 23,024,664.00	\$ 10,824,769.92	\$ 678,576.72	\$ -		
			\$ 49,500,000.00						\$ 5,462,325.21	\$ 4,915,063.98	
Measure J Interest Revenue	\$ -	\$ 1,785,048.30	\$ -	\$ -	\$ -	\$ -	\$ -	\$ -	\$ -		
Series A Interest Revenue			\$ 1,442,666.32	\$ 90,671.05	\$ 559,702.70	\$ 642,135.80	\$ 150,156.77	\$ -	\$ -		
Series B Interest Revenue			\$ 942,381.98	\$ -	\$ -	\$ -	\$ -	\$ 942,381.98	\$ -		
Transfer of Interest Series A to Scenario Village Project			\$ (600,000.00)	\$ -	\$ -	\$ -	\$ -	\$ (600,000.00)	\$ -		
Misc Income		\$ 5,936.40	\$ -	\$ 5,936.40	\$ 1,558.00	\$ -	\$ 4,378.40	\$ -	\$ -		
Issuance		Actual									
Series A Issuance \$\$\$	\$ 42,000,000	\$ 41,978,955.02									0.999
Series B Issuance \$\$\$	\$ 49,500,000	\$ 10,377,389.19									0.21
Series C Issuance \$\$\$	\$ 46,000,000	\$ -									
Series D Issuance \$\$\$	\$ 26,900,000	\$ -									
Series E Issuance \$\$\$	\$ 25,600,000	\$ -									
Total Measure J	\$ 190,000,000.00	\$ -	\$ -	\$ -	\$ -	\$ -	\$ -	\$ -	\$ -		
Sale of Series A Bonds	\$ 185,000.00	\$ -	\$ -	\$ -	\$ -	\$ -	\$ -	\$ -	\$ -		
Sale of Series B Bonds	\$ 170,410.69	\$ -	\$ -	\$ -	\$ -	\$ -	\$ -	\$ -	\$ -		
Other Income	\$ 5,936.40	\$ -	\$ -	\$ -	\$ -	\$ -	\$ -	\$ -	\$ -		
Total Interest	\$ 1,785,048	\$ -	\$ -	\$ -	\$ -	\$ -	\$ -	\$ -	\$ -		
Total Measure J Funds with Interest	\$ 191,435,574	\$ -	\$ -	\$ -	\$ -	\$ -	\$ -	\$ -	\$ -		

Project Sequence

Series C (May 2023 – May 2025)

- Science Building (construction)
- I.T. Upgrades
- Facilities Infrastructure Upgrades

Series D (May 2025 – May 2028)

- Life Science Remodel for Veterans and Student Services
- Physical Science Remodel
- Athletics Phase II
- I.T. Upgrades
- Facilities Infrastructure Upgrades

Series E (May 2028 – May 2030)

- Law Enforcement Training Center
- Removal of Portables for Veterans and Student Services
- Facilities Infrastructure Upgrades
- I.T. Upgrades

ID	Task Name	Duration	Start	Finish	Timeline (2016-2031)																											
1	Bond Approved	1 day	Tue 11/8/16	Tue 11/8/16	Timeline grid showing 2016-2031 with a marker at 11/8/16.																											
2	Arrange Funds - Series A	40 days	Thu 11/10/16	Wed 1/4/17	Timeline grid.																											
3	Arrange Funds - Series B	45 days	Mon 4/1/19	Fri 5/31/19	Timeline grid.																											
4	Skyway Remodel	591 days	Fri 3/24/17	Thu 6/27/19	Timeline grid.																											
5	Skyway construction	591 days	Fri 3/24/17	Thu 6/27/19	Timeline grid with bar from 3/24/17 to 6/27/19.																											
6	Welding Building	675 days	Mon 4/3/17	Thu 10/31/19	Timeline grid.																											
7	Welding Design/Construction	675 days	Mon 4/3/17	Thu 10/31/19	Timeline grid with bar from 4/3/17 to 10/31/19.																											
8	Athletics	2159 days	Mon 10/2/17	Wed 12/31/25	Timeline grid.																											
9	Field House/Press Box	556 days	Mon 10/2/17	Sat 11/16/19	Timeline grid with bar from 10/2/17 to 11/16/19.																											
10	Covered Practice Field	260 days	Mon 1/6/25	Wed 12/31/25	Timeline grid with bar from 1/6/25 to 12/31/25.																											
11	Technology/Math Renovation	587 days	Wed 10/16/19	Tue 1/11/22	Timeline grid.																											
12	TE Design	275 days	Wed 10/16/19	Mon 11/2/20	Timeline grid with bar from 10/16/19 to 11/2/20.																											
13	TE Bidding / Construction	559 days	Mon 11/25/19	Tue 1/11/22	Timeline grid with bar from 11/25/19 to 1/11/22.																											
14	Scenario Village	576 days	Mon 6/3/19	Fri 8/13/21	Timeline grid.																											
15	Design & Construction	576 days	Mon 6/3/19	Fri 8/13/21	Timeline grid with bar from 6/3/19 to 8/13/21.																											
16	Science Building	1025 days	Thu 7/1/21	Sat 5/31/25	Timeline grid.																											
17	Science Building Design	133 days	Thu 7/1/21	Sat 1/1/22	Timeline grid with bar from 7/1/21 to 1/1/22.																											
18	Science Building Construction	763 days	Fri 7/1/22	Sat 5/31/25	Timeline grid with bar from 7/1/22 to 5/31/25.																											
19	Physical Science Remodel	523 days	Sun 6/1/25	Tue 6/1/27	Timeline grid.																											
20	PS Design	219 days	Sun 6/1/25	Wed 4/1/26	Timeline grid with bar from 6/1/25 to 4/1/26.																											
21	PS Construction	305 days	Wed 4/1/26	Tue 6/1/27	Timeline grid with bar from 4/1/26 to 6/1/27.																											
22	Life Science Remodel	524 days	Mon 6/1/26	Thu 6/1/28	Timeline grid.																											
23	LS Design	219 days	Mon 6/1/26	Thu 4/1/27	Timeline grid.																											
24	LS Construction	306 days	Thu 4/1/27	Thu 6/1/28	Timeline grid with bar from 4/1/27 to 6/1/28.																											
25	Law Enforcement Training Center	612 days	Mon 5/1/28	Sun 9/1/30	Timeline grid.																											
26	LETC Design	219 days	Mon 5/1/28	Wed 2/28/29	Timeline grid with bar from 5/1/28 to 2/28/29.																											
27	LETC Construction	393 days	Thu 3/1/29	Sun 9/1/30	Timeline grid with bar from 3/1/29 to 9/1/30.																											
28	Remove Portables	196 days	Mon 7/3/28	Sat 3/31/29	Timeline grid with bar from 7/3/28 to 3/31/29.																											
29	Facilities Infrastructure	3463 days	Mon 3/6/17	Fri 5/31/30	Timeline grid.																											
30	Infrastructure Series A	957 days	Mon 3/6/17	Fri 10/30/20	Timeline grid with bar from 3/6/17 to 10/30/20.																											
31	Infrastructure Series B	785 days	Sat 6/1/19	Tue 5/31/22	Timeline grid with bar from 6/1/19 to 5/31/22.																											
32	Infrastructure Series C	784 days	Thu 6/2/22	Sat 5/31/25	Timeline grid with bar from 6/2/22 to 5/31/25.																											
33	Infrastructure Series D	784 days	Sun 6/1/25	Wed 5/31/28	Timeline grid with bar from 6/1/25 to 5/31/28.																											
34	Infrastructure Series E	524 days	Thu 6/1/28	Fri 5/31/30	Timeline grid with bar from 6/1/28 to 5/31/30.																											
35	IT Upgrades	3593 days	Mon 9/5/16	Fri 5/31/30	Timeline grid with bar from 9/5/16 to 5/31/30.																											



Project Bond Allocations

- **Welding Building \$23M:** This project would replace the outdated welding facility with a modern structure that would enable the program to maintain its current excellence, expand the number of students that could be accommodated, and provide the space necessary to meet the needs of local manufacturers.
- **Skyway Center Remodel \$2M - \$5M:** This project completes the building and provides additional space for the Automotive Program for diesel fuel technology.
- **Athletics \$12M:** This project modernizes the College's athletic facilities and includes replacement of the press box and field house, removal of the tennis courts, and the addition of a synthetic practice field.
- **Facilities Infrastructure \$21.7M:** This project replaces the PVC gas lines, broken storm drains and sewer lines, improves deteriorated parking lots and service roads, and makes upgrades to meet newer accessibility requirements.
- **I.T. Upgrades \$11M:** This project updates the College's technology infrastructure to alleviate information security issues and provides instruction technology to meet faculty and student needs.
- **Scenario Village \$1M:** This project will provide for dedicated space on campus for academies scenario testing.
- **Technology Building Remodel \$6.8M:** This project will renovate this building to provide modern classrooms to support Mathematics.



Project Bond Allocations

- **Science Building \$73M:** This project provides a new Sciences Building that meets current and projected needs for the Physical and Life Science programs.
- **Life Science Remodel for Veterans and Student Services \$10M:** This project will renovate the existing Life Science building to accommodate the Veterans Center, Safe Place, Sustainability Resource Center, Regional Testing Center and the Call Center. The result will be permanent space for all of these Student Services programs.
- **Physical Science Remodel \$10M:** This project will renovate the existing Physical Science building to accommodate classroom space for Agriculture, Natural Resources, Horticulture and MESA Programs.
- **Law Enforcement Training Center \$16M:** This project would complete the Public Safety Training Area by constructing an indoor firing range.
- **Remove Student Services Portables \$500K**