

How to Read Your Meter

Gas and electric meters record the total amount of gas or electricity consumed, just as a car's odometer records mileage. Meters are highly accurate instruments. In fact, our accuracy record is measured and found to be correct more than 99 percent of the time. You can also check the accuracy of the meter by learning to read your own meters. Your meter readings can be obtained by logging on to your [PGE.com My Account](#), or by reading the meter itself. Here's how:

Dial Meters

Read all the dials, except the testing dials on a gas meter. (Testing dials have no numbers)

If the hand on any dial is between two numbers, read the smaller number

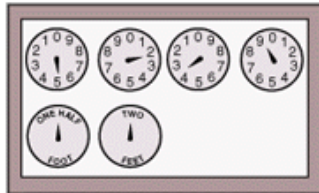
If the hand appears directly on a number, read that number only if the hand to the right is on or just past zero; if the hand to the right is not on zero, take the smaller number

To help us keep track of how much energy you use, please keep your meters accessible and clear of obstructions

Detail, Electric Meter



7 3 1 5 6



Detail, Gas Meter

5 2 3 9

SmartMeter™ Electric Meters

Determine which meter type you have, and follow the instructions below the corresponding picture to read your meter. [See video](#) of a **SmartMeter** electric meter.



- This **SmartMeter** electric meter by Landis + Gyr uses a digital readout alternating between three different displays:

- Display 1 - will display "88888...." indicating that the unit is functioning properly

- Display 2 - shows the total kWh consumption. This 5-digit number is cumulative and may include leading zeros

- Display 3 - shows the current electric usage at the premise

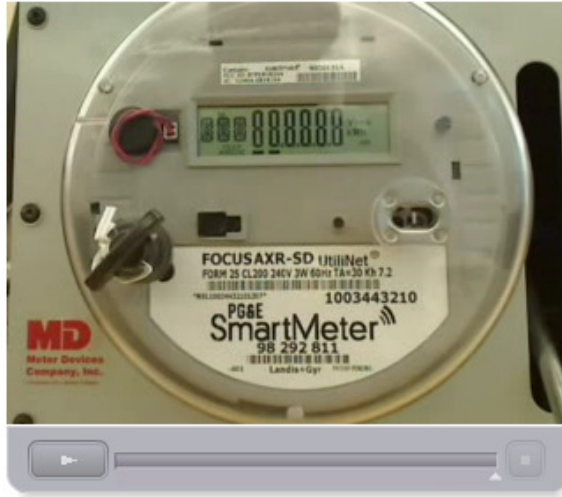


- This **SmartMeter** electric meter by General Electric uses a digital readout with one standard display
- The 5-digit display showing the total kWh consumption is located on the top line and is always on. This number is cumulative. NOTE: A segment check may display momentarily, but will change back to the standard display.
- Below the kWh display, the 3-digit voltage level and 3-digit current electric usage displays will alternate (i.e., "240 Volts" is shown for a few seconds and then toggles to ".345 kW" for a few seconds)

- NOTE: The ID number to the left of the alternating display is not meaningful.

[SmartMeter™ Video](#)

Actual **SmartMeter** electric meter in use. Click the "play" button to view.



PG&E refers to Pacific Gas and Electric Company, a subsidiary of PG&E Corporation. © 2009 Pacific Gas and Electric Company. All rights reserved.